

# RHINOWATER

COMPANY PROFILE





## COMPANY INTRODUCTION

Rhino Water (Pty) Ltd is part of the Rhino Group of Companies, and provides a wide range of solutions and services within the water industry.



The Rhino Group is diversified extensively through several independent companies in line with it's pivotal strategies:

### FOOD-ENERGY-WATER SOLUTIONS

agricultural, energy and water supply solutions



### GREEN BUILDING SOLUTIONS

construction materials, passive design elements, energy demand mitigation & renewable energy supply as well as rainwater harvesting & waste water recycling.



Significant synergies exist between the various elements, thereby very often ensuring unique turnkey abilities and a solutions-centric versus product approach. Our strategic intent is deliberately encompassed through 'Partnering with Professionals' and as such we align ourselves with best local and international service providers to offer state-of-the-art solutions to the client. The Rhino Group has it's own distribution structure, with branches in Port Elizabeth, East London, Johannesburg and Cape Town, along with own warehousing capacity, as well as a network of agents throughout South Africa and a number of neighbouring countries.



**RHINOENERGY**  
SOLAR. ENERGY. EXCELLENCE.

## SERVICES AND PROJECTS

Rhino Water designs, manufactures, installs and maintains customised plants and solutions for water harvesting, water filtration, black and grey water treatment, sludge & effluent treatment and lake & pond rehabilitation.

Clients vary from small domestic users to large industry, including factories, office blocks and shopping centres across South Africa and several African countries, as well as farms and housing developments in South Africa.

### SPECIALISED SERVICES OFFERED

**Water Harvesting:** catchment from roofs and paved areas into tanks and reservoirs up to two million litre capacity

**Dam Liners & Floatation Covers:** lining of earth dams, ponds and reservoirs, with installation of floatation covers to reduce evaporation and contamination

**Filtration:** sand, multimedia, carbon, ultra-filtration, water softening, extraction of contaminants and metals, Ultraviolet sterilization, Reverse Osmosis

**Aquaifers & Reed Bed Systems** for natural filtration of water

**Grey Water Systems:** treatment of grey water to toilet flush or irrigation standards

**Black Water Systems:** treatment of black water to toilet flush, irrigation or wash water standards

**Car Wash Systems** for recycling of water

**Remediation** of ponds and lakes

**Abattoir Waste Treatment:** conversion of abattoir slaughter waste to wash water for re-use, thereby reducing water consumption and effluent disposal. Solutions are offered in partnership with BluePlanet SA

**Sludge and Effluent Management:** treatment of manure ponds (piggeries, dairies), effluent from food processors, wineries and distillers, tanneries, etc. Solutions are offered in partnership with BluePlanet SA

**Ozone Applications:** air quality and odour control, bacterial control

We are proud to be agents for and/or associated with the following professionals:





## WATER HARVESTING

Harvesting of water from:

Roofs and paved areas | Boreholes and sub-surface springs | Rivers | Sea (desalination)

Containment of harvested water in tanks and reservoirs from 1000 litre to 2 million litre capacity, or dams.

### Dube Tradeport Greenhouse And Water Harvesting



### Lynnwood Bridge Water Harvesting To Toilet Flush



### Water Storage 1000 Litre To 2m Litre Capacity



## DAM LINERS AND FLOATATION COVERS

Construction and installation of dam liners and floatation covers for containment of water, sludge, fertilizers, waste water etc.

Installation of geotextiles as under layer to dam liner where soil conditions require protection of the dam liner.

Liners for canals and reservoirs.

### Nieu Bethesda Waste Water Treatment Works



### Dube Tradeport





## WATER FILTRATION

Treatment of water from boreholes, sub-surface springs, dams, rivers, industrial processes, roofs and paved areas and sea (desalination). Customised solutions to deliver water quality to client requirements, e.g. process water, irrigation or potable use.

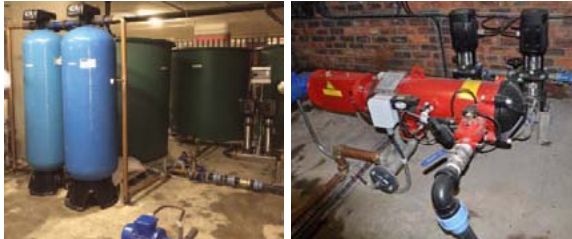
Technologies:

- Sand , bag and SAF Filtration
- Carbon filtration
- Resin filtration
- Ultra-filtration
- UV
- Reverse osmosis

Dube Tradeport – filtration of rain- & borehole water and sewage effluent 120m3/h



Lynnwood Bridge  
Water harvesting to toilet flush



Dube Tradeport  
20m3/h UV sterilization



Lumotech  
Filtration of sub-surface water to plant



PPC  
Sub-surface water treatment



## BLACK WATER SYSTEMS

Treatment of sewage | Fixed film aerated technology



Mozambique - Coal Mine  
200 Kl per day concrete sewage treatment plant



# GREY WATER SYSTEMS

Treatment of grey water | Membrane filtration | Car wash systems



Eurocar Car Wash



Shell Ultra City - Three Sisters



Domestic Systems



# BIO REMEDIATION

Abattoirs: slaughter waste and blood

Piggeries, Dairies and Poultry Houses: manure and sludge ponds

Wineries, Distillers, Food Processing

Plants: effluent treatment

Sewerage Works

Soil Remediation: hydrocarbons

Golf Courses: water and grass remediation

**Technologies:**

Anaerobic and aerobic digestion, aeration and membrane filtration

Use of natural bacteria to accelerate digestion



Before Treatment



After Treatment



Before Treatment



After Treatment





House Rhino at Crossways

## AQUAFERS AND REED BED SYSTEMS

Natural filtration of water through aquifers and reed bed systems.

Selection of plant species specifically for each application based on water quality.

Natural swimming pools free from chemicals.



## REMEDICATION OF PONDS AND LAKES

Treatment of bacteria and algae in ponds and lakes using bacteria



## OZONE

Odour control | Water quality management

George Laundry

George Laundry



Anglo Plats Modikwa Mine



Anglo Plats Modikwa Mine



Plettenbergbay / Midvaal SASOL



Ushaka Island Aquarium





Rhino Water (Pty) Ltd

Tel : +27 41 451 3197

Fax : +27 41 451 2223

[www.rhinoplastics.co.za](http://www.rhinoplastics.co.za)

15 Voyle Street, Sydenham  
Port Elizabeth, 6001  
South Africa

For sales and enquiries please contact:

Sarel Bam

+27 41 451 3197

+27 82 783 6817

[sarel@rhinowater.co.za](mailto:sarel@rhinowater.co.za)

Brian van Niekerk

+27 41 451 3197

+27 82 652 5564

[brianv@rhinoplastics.co.za](mailto:brianv@rhinoplastics.co.za)

Andrew Barton

+27 41 451 3197

+27 79 891 7668

[andrewb@rhinoplastics.co.za](mailto:andrewb@rhinoplastics.co.za)



RHINO WATER is part of the

**RHINO GROUP**

Plastics. Agriculture. Lighting. Water.  
Energy. Green Building. Packaging.

