

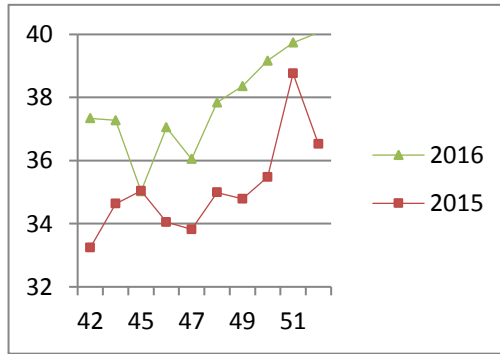
## NATIONAL SOUTH AFRICAN PRICE INFORMATION FOR WEEK 52

Class Units Avg Mass Avg Purch Price Avg Selling Price Selling min Selling max From 2016/12/26 To 2017/01/01

### CATTLE

Class	Units	Avg Mass	Avg Purch Price	Avg Selling Price	Selling min	Selling max
A2	14177	259.85	<b>38.89</b>	<b>39.97</b>	30.23	43.50
A3	2115	273.99	<b>38.99</b>	<b>40.53</b>	37.17	43.30
AB2	701	255.95	<b>36.01</b>	<b>39.14</b>	32.41	44.23
AB3	202	289.82	<b>36.68</b>	<b>39.56</b>	36.50	44.23
B2	691	233.62	<b>34.85</b>	<b>37.16</b>	31.13	43.81
B3	137	267.34	<b>35.16</b>	<b>37.08</b>	33.50	38.14
C2	2571	243.86	<b>34.18</b>	<b>36.32</b>	31.82	38.34
C3	800	272.13	<b>34.58</b>	<b>36.66</b>	30.61	37.77
<b>21 394</b>						

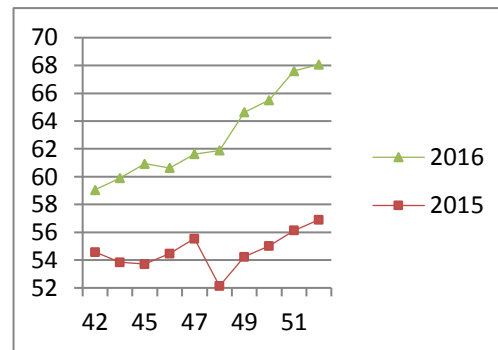
### Beef A2 - Sales Price



### LAMB/SHEEP

A0	592	12.28	<b>55.14</b>	<b>56.17</b>	51.00	60.00
A1	1755	16.15	<b>66.02</b>	<b>66.66</b>	57.70	70.51
A2	14017	19.53	<b>67.68</b>	<b>68.05</b>	64.13	76.15
A3	2842	22.15	<b>68.39</b>	<b>67.34</b>	64.01	75.83
A4	546	24.17	<b>58.46</b>	<b>59.73</b>	56.00	66.13
A5	69	24.83	<b>52.37</b>	<b>52.62</b>	44.71	66.61
A6	93	20.63	<b>49.03</b>	<b>50.91</b>	46.24	61.50
AB2	292	21.32	<b>57.35</b>	<b>60.43</b>	54.00	63.19
AB3	78	23.88	<b>58.02</b>	<b>62.01</b>	51.14	69.02
B2	1147	23.72	<b>53.12</b>	<b>54.76</b>	45.00	60.48
B3	152	26.97	<b>53.04</b>	<b>54.96</b>	48.48	59.50
C2	1421	24.76	<b>51.00</b>	<b>52.98</b>	46.77	58.32
C3	355	28.13	<b>51.68</b>	<b>52.69</b>	47.93	54.40
<b>23 359</b>						

### Lamb A2 - Sales Price

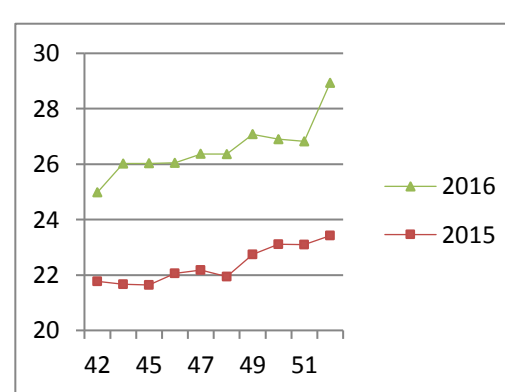


### PIGS

Class	Units	Avg Mass	Avg Purch Price	Purch Min	Purch Max
BP	5119	69.79	<b>28.11</b>	22.30	30.50
BO	2540	74.29	<b>28.94</b>	22.30	30.50
BR	283	77.91	<b>28.73</b>	25.50	30.00
BC	38	76.80	<b>27.21</b>	21.06	29.00
BU	9	78.88	<b>27.07</b>	20.20	29.00
BS	19	71.99	<b>29.00</b>	29.00	29.00
PP	2883	50.22	<b>29.27</b>	22.00	32.46
PO	205	47.93	<b>29.52</b>	22.00	32.47
PR	31	43.24	<b>28.55</b>	26.00	29.00
PC	14	43.21	<b>28.75</b>	27.50	29.00
PU	2	49.85	<b>29.00</b>	29.00	29.00
PS	2	48.30	<b>29.00</b>	29.00	29.00
SAS	12	105.14	<b>10.05</b>	8.00	17.30
HP	1094	85.61	<b>26.28</b>	25.90	29.00
HO	1001	86.91	<b>26.11</b>	25.88	28.96
HR	231	87.98	<b>25.60</b>	25.50	28.50
HC	30	87.68	<b>20.89</b>	20.71	26.50
HU	4	87.38	<b>21.34</b>	19.78	25.50
HS	1	100.10	<b>15.63</b>	15.63	15.63
CP	713	60.35	<b>29.64</b>	22.00	30.97
CO	73	61.14	<b>29.44</b>	26.00	30.89
CR	2	59.16	<b>26.24</b>	25.44	27.00
SAS	173	169.83	<b>16.90</b>	15.00	28.00
<b>14479</b>					

Hide	Feedlot	16.30
	Veldt	16.41
Dorper	ea	40.56
Merino	ea	85.97

### Baconer BO - Purchase Price



THIS INFORMATION IS PROTECTED AGAINST COPYING OR DISTRIBUTION WITHOUT PRIOR PERMISSION FROM THE RMAA BOARD.

FOR ENQUIRIES, PLEASE CONTACT RMAA AT TEL (012) 349 1237/8 or [priceinformation@rmaa.co.za](mailto:priceinformation@rmaa.co.za)

Disclaimer: In no event shall the RMAA be liable for any direct, special, indirect or consequential damages, or any other damages of any kind, including but not limited to loss of use, loss of profits, or loss of data, whether in an action in contract, tort (including but not limited to negligence), or otherwise, arising out of or in any way connected with the use of this information. While the RMAA takes great care in compiling the contents of this page, it is nevertheless only meant to provide non-binding general information and cannot replace detailed individual advice to help the prospective buyer make his decision. The RMAA does not guarantee that the information on these pages is up-to-date, accurate and complete.