

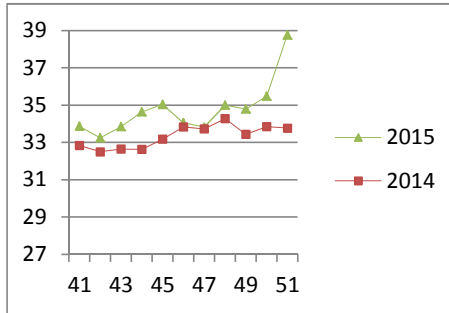
NATIONAL SOUTH AFRICAN PRICE INFORMATION FOR WEEK 51

Class Units Avg Mass Avg Purch Price Avg Selling Price Selling min Selling max From 2015/12/14 To 2015/12/20

CATTLE

Class	Units	Avg Mass	Avg Purch Price	Avg Selling Price	Selling min	Selling max
A2	16147	258.00	35.86	38.76	26.00	39.87
A3	1807	275.07	35.75	38.32	33.04	40.07
AB2	627	264.27	34.24	35.94	28.00	40.02
AB3	87	275.67	34.59	36.68	30.88	40.42
B2	352	240.06	30.98	32.08	24.19	38.74
B3	64	274.92	30.76	31.33	25.82	37.02
C2	1306	255.36	28.81	28.69	24.37	31.00
C3	235	291.57	29.38	29.39	27.12	31.00
20 625						

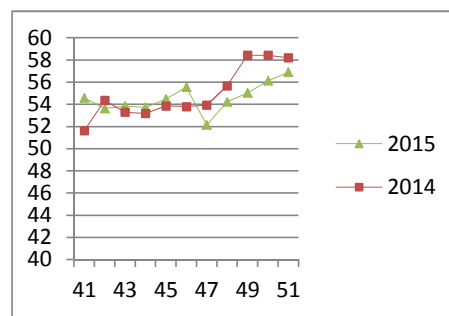
Beef A2 - Sales Price



LAMB/SHEEP

A0	714	12.43	44.46	44.57	36.99	49.61
A1	3797	14.58	56.47	56.10	43.00	59.00
A2	32217	17.87	56.90	56.90	53.83	63.76
A3	5373	20.61	56.34	56.34	53.87	63.67
A4	1240	21.09	49.01	48.82	46.74	58.50
A5	285	21.48	43.64	43.03	36.00	59.50
A6	448	20.95	42.97	42.32	36.00	50.24
AB2	548	18.60	47.74	48.46	45.39	57.00
AB3	149	21.66	48.69	49.27	45.67	57.00
B2	159	22.46	42.68	43.89	36.48	48.00
B3	58	26.82	42.59	43.14	36.48	48.00
C2	2668	23.09	40.44	41.55	36.00	46.66
C3	707	25.98	41.90	41.95	36.23	45.81
48 363						

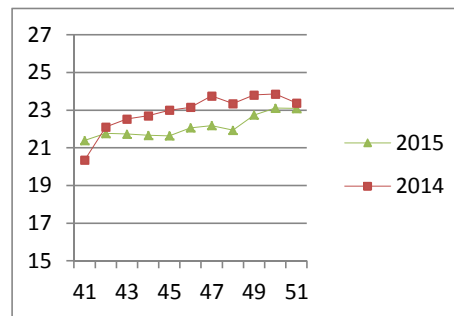
Lamb A2 - Sales Price



PIGS

Class	Units	Avg Mass	Avg Purch Price	Purch Min	Purch Max
BC	9	81.07	19.38	13.30	25.56
BO	1559	80.17	23.09	22.00	26.50
BP	3599	75.25	23.19	22.00	26.97
BR	87	76.01	21.44	14.60	25.22
BS	1	88.00	20.00	20.00	20.00
BU	5	79.86	21.14	19.00	24.13
PC	3	38.8	20.67	20.67	20.67
PO	119	52.65	24.53	23.45	28.40
PP	1095	50.86	26.16	23.25	28.38
PR	5	46.98	23.27	22.92	23.50
SAS	212	149.19	17.12	16.00	20.50
6 694					
Hide	Feedlot	12.79			
	Veldt	12.79			
Dorper	ea	87.22			
Merino	ea	80.00			

Baconer BO - Purchase Price



THIS INFORMATION IS PROTECTED AGAINST COPYING OR DISTRIBUTION WITHOUT PRIOR PERMISSION FROM THE RMAA BOARD.

FOR ENQUIRIES, PLEASE CONTACT RMAA AT TEL (012) 349 1237/8 or priceinformation@rmaa.co.za

Disclaimer: In no event shall the RMAA be liable for any direct, special, indirect or consequential damages, or any other damages of any kind, including but not limited to loss of use, loss of profits, or loss of data, whether in an action in contract, tort (including but not limited to negligence), or otherwise, arising out of or in any way connected with the use of this information. While the RMAA takes great care in compiling the contents of this page, it is nevertheless only meant to provide non-binding general information and cannot replace detailed individual advice to help the prospective buyer make his decision. The RMAA does not guarantee that the information on these pages is up-to-date, accurate and complete.