

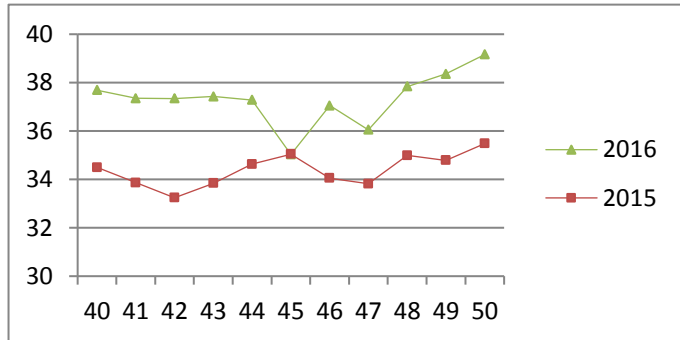
NATIONAL SOUTH AFRICAN PRICE INFORMATION FOR WEEK 50

Class Units Avg Mass Avg Purch Price Avg Selling Price Selling min max From 2016/12/12 To 2016/12/18

CATTLE

Class	Units	Avg Mass	Avg Purch Price	Avg Selling Price	Selling min	Selling max
A2	21215	263.46	39.17	39.17	36.00	43.20
A3	2615	278.65	39.15	39.17	36.00	42.21
AB2	647	252.74	36.88	38.00	27.83	42.96
AB3	142	277.74	37.48	37.77	32.50	42.96
B2	391	241.96	35.26	37.45	32.00	41.04
B3	70	258.10	34.32	36.53	32.00	39.00
C2	1669	248.67	34.19	35.78	31.00	39.96
C3	404	280.44	34.35	36.28	30.00	38.50
	27 153					

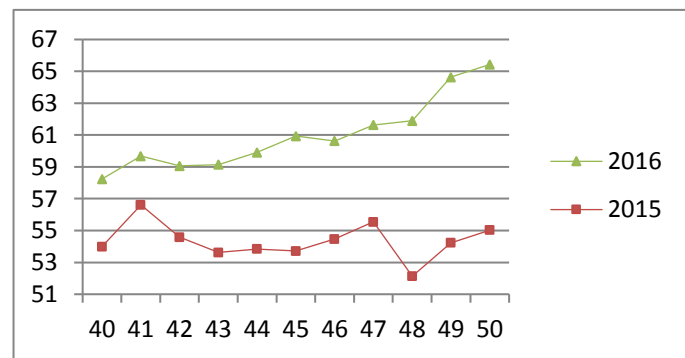
Beef A2 - Sales Price



LAMB/SHEEP

Class	Units	Avg Mass	Avg Purch Price	Avg Selling Price	Selling min	Selling max
A0	576	170.88	55.15	53.14	49.00	69.00
A1	2667	15.68	64.35	64.93	55.00	68.54
A2	18000	20.03	65.60	65.52	62.42	69.27
A3	3575	21.92	66.54	64.62	62.16	68.77
A4	713	22.74	58.68	58.95	52.00	63.03
A5	137	22.01	52.72	50.42	44.00	56.86
A6	156	20.55	51.84	51.52	44.53	60.00
AB2	298	21.89	54.91	56.93	53.58	66.96
AB3	55	24.93	54.56	56.20	50.62	63.17
B2	959	24.83	51.16	53.73	45.13	58.04
B3	193	27.28	50.94	53.10	44.98	56.21
C2	1174	24.33	48.06	50.21	46.00	55.00
C3	374	26.93	47.96	49.74	46.00	55.00
	28 877					

Lamb A2 - Sales Price

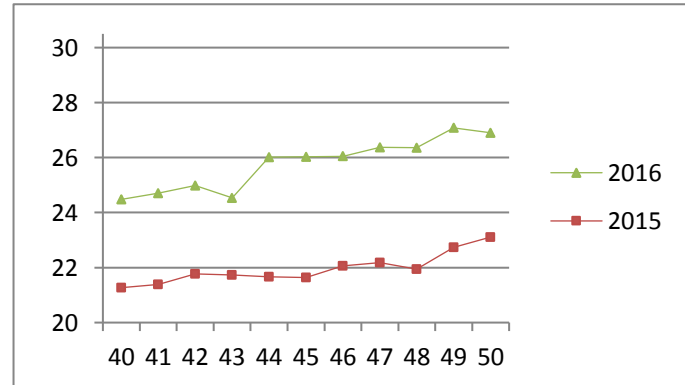


PIGS

Class	Units	Avg Mass	Avg Purch Price	Purch Min	Purch Max
BP	8694	71.97	26.56	22.30	30.85
BO	3810	73.70	26.90	22.30	30.74
BR	464	73.73	26.47	24.30	30.50
BC	42	76.29	23.63	17.45	30.00
BU	8	73.94	19.22	13.00	25.00
BS	18	73.18	22.54	11.00	27.50
PP	3817	77.43	32.12	25.20	35.49
PO	334	67.47	31.31	25.12	33.58
PR	27	49.71	25.48	19.48	28.00
PC	7	44.87	26.72	24.50	29.50
PU	20	128.25	33.70	26.75	34.00
PS	4	164.60	33.70	28.00	34.00
SAS	59	137.71	14.58	6.00	23.00
HP	3293	84.88	26.82	22.30	31.69
HO	3346	85.48	25.84	22.30	30.29
HR	488	85.92	25.15	23.30	29.77
HC	46	87.20	21.55	17.19	29.50
HU	11	85.28	21.81	13.00	27.50
HS	5	88.92	13.71	11.00	19.00
CP	3272	60.78	27.25	24.54	32.00
CO	858	62.46	27.09	26.31	31.00
CR	156	61.42	27.65	25.75	29.00
CC	8	60.65	26.11	21.50	27.00
CU	1	63.00	13.00	13.00	13.00
CS	2	41.55	23.63	13.00	30.26
SAS	449	160.26	17.32	14.00	20.30
	29239				

Hide	Feedlot	15.65
	Veldt	15.67
Dorper	ea	43.85
Merino	ea	88.48

Baconer BO - Purchase Price



THIS INFORMATION IS PROTECTED AGAINST COPYING OR DISTRIBUTION WITHOUT PRIOR PERMISSION FROM THE RMAA BOARD.

FOR ENQUIRIES, PLEASE CONTACT RMAA AT TEL (012) 349 1237/8 or priceinformation@rmaa.co.za

Disclaimer: In no event shall the RMAA be liable for any direct, special, indirect or consequential damages, or any other damages of any kind, including but not limited to loss of use, loss of profits, or loss of data, whether in an action in contract, tort (including but not limited to negligence), or otherwise, arising out of or in any way connected with the use of this information. While the RMAA takes great care in compiling the contents of this page, it is nevertheless only meant to provide non-binding general information and cannot replace detailed individual advice to help the prospective buyer make his decision. The RMAA does not guarantee that the information on these pages is up-to-date, accurate and complete.