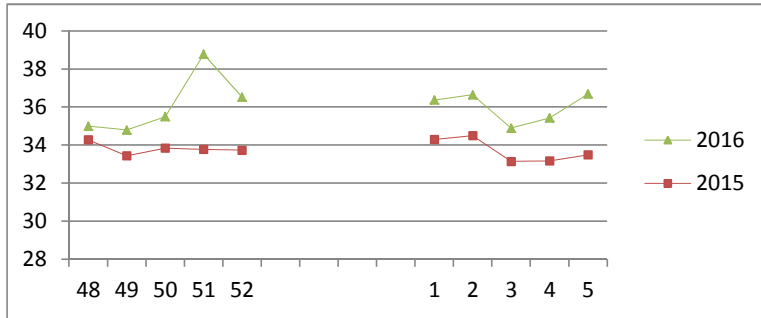


NATIONAL SOUTH AFRICAN PRICE INFORMATION FOR WEEK 5

From 2016/02/01 To 2016/02/07

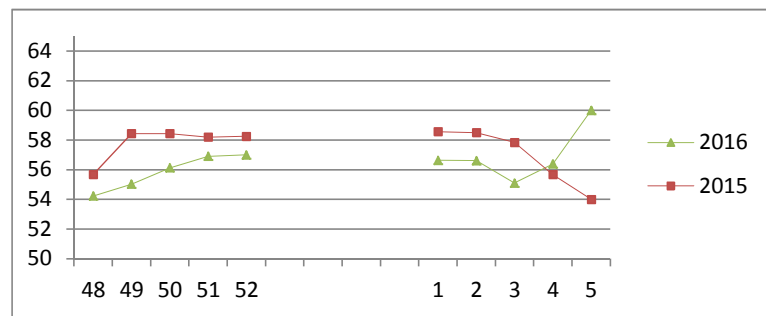
Class	Units	Avg Mass	Avg Purch Price	Avg Selling Price	Selling min	Selling max
CATTLE						
A2	12080	263.76	36.56	36.69	26.50	39.50
A3	1458	280.76	36.43	36.23	34.12	39.50
AB2	439	257.57	34.45	35.33	30.61	38.50
AB3	74	283.26	34.87	35.68	31.00	37.00
B2	361	244.36	31.76	32.47	28.83	35.50
B3	70	275.24	31.26	31.59	28.80	35.00
C2	1583	255.60	29.96	30.07	27.50	35.00
C3	337	287.80	30.33	30.83	27.70	34.50
16 402						

Beef A2 - Sales Price



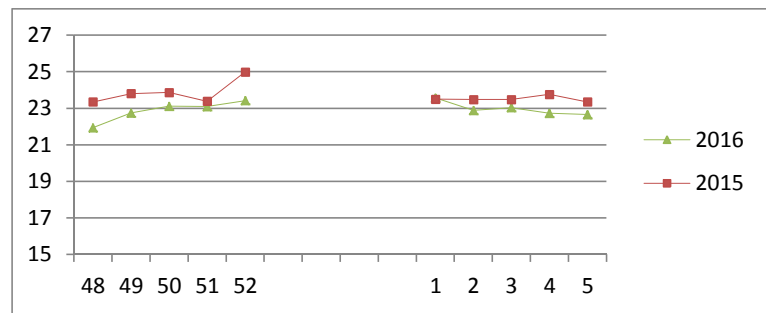
Class	Units	Avg Mass	Avg Purch Price	Avg Selling Price	Selling min	Selling max
LAMB/SHEEP						
A0	261	11.68	39.64	42.84	30.70	58.50
A1	941	14.01	57.53	58.68	42.50	61.23
A2	10032	19.46	57.08	60.00	55.00	61.50
A3	2064	20.92	57.34	60.04	53.60	64.28
A4	372	21.58	50.78	51.13	47.50	58.99
A5	87	23.84	47.77	48.31	43.00	53.00
A6	153	24.24	47.56	47.19	35.56	50.63
AB2	347	19.76	48.28	50.17	43.00	63.00
AB3	44	22.92	47.32	51.81	43.00	59.70
B2	117	23.00	43.68	47.02	42.00	50.00
B3	49	25.93	43.90	46.71	43.00	56.00
C2	1053	22.51	43.62	44.96	36.00	53.50
C3	254	25.73	43.27	44.79	42.00	48.22
15 774						

Lamb A2 - Sales Price



Class	Units	Avg Mass	Avg Purch Price	Purch Min	Purch Max
PIGS					
BC	18	78.721	20.16	13.30	23.00
BO	2260	74.213	22.65	21.31	24.00
BP	5395	72.118	22.72	21.74	26.00
BR	209	77.086	21.88	15.00	24.00
BS	1	88.00	21.80	21.80	21.80
BU	3	85	18.96	18.00	19.50
PC	1	43.3	19.00	19.00	19.00
PO	182	52.66	23.69	20.88	27.20
PP	1255	50.11	24.23	21.33	27.09
PR	227	46.65	24.92	20.32	25.11
SAS	169	145.22	15.90	10.00	17.00
HP	16	91.99	17.09	16.00	22.40
HO	1492	87.112	22.48	21.50	23.00
HR	1247	85.381	22.54	22.00	23.00
HC	228	89.445	21.80	20.50	23.00
HU	2	96.6	12.66	9.40	16.00
HS	3	86.933	16.46	13.00	19.40
CO	142	58.246	23.45	10.00	26.25
CP	803	59.694	23.76	10.00	27.00
CC	16	59.925	23.09	22.00	23.50
SAU	392	606.11	14.4	13.96	17.00

Baconer BO - Purchase Price



Hide	Feedlot	13.82
	Veldt	13.63
Dorper	ea	79.17
Merino	ea	93.27

13 979

THIS INFORMATION IS PROTECTED AGAINST COPYING OR DISTRIBUTION WITHOUT PRIOR PERMISSION FROM THE RMAA BOARD.

FOR ENQUIRIES, PLEASE CONTACT RMAA AT TEL (012) 349 1237/8 or priceinformation@rmaa.co.za

Disclaimer: In no event shall the RMAA be liable for any direct, special, indirect or consequential damages, or any other damages of any kind, including but not limited to loss of use, loss of profits, or loss of data, whether in an action in contract, tort (including but not limited to negligence), or otherwise, arising out of or in any way connected with the use of this information. While the RMAA takes great care in compiling the contents of this page, it is nevertheless only meant to provide non-binding general information and cannot replace detailed individual advice to help the prospective buyer make his decision. The RMAA does not guarantee that the information on these pages is up-to-date, accurate and complete.