

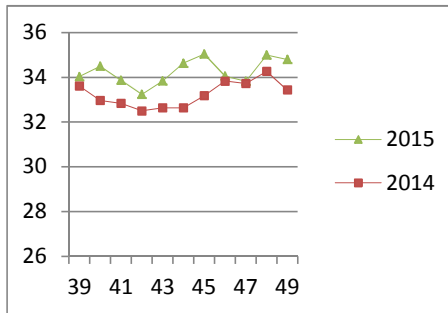
NATIONAL SOUTH AFRICAN PRICE INFORMATION FOR WEEK 49

Class Units Avg Mass Avg Purch Price Avg Selling Price Selling min Selling max From 2015/11/30 To 2015/12/06

CATTLE

Class	Units	Avg Mass	Avg Purch Price	Avg Selling Price	Selling min	Selling max
A2	14114	249.75	35.16	34.79	32.90	38.90
A3	1693	233.12	35.43	35.25	33.20	38.90
AB2	596	272.46	33.87	33.92	30.14	38.90
AB3	110	277.02	34.39	34.18	28.97	38.90
B2	361	256.81	31.55	31.35	26.05	37.76
B3	54	275.38	30.89	30.47	28.72	37.76
C2	1110	252.02	28.06	27.55	26.41	33.00
C3	198	292.32	29.13	28.90	26.76	33.00
	18 236					

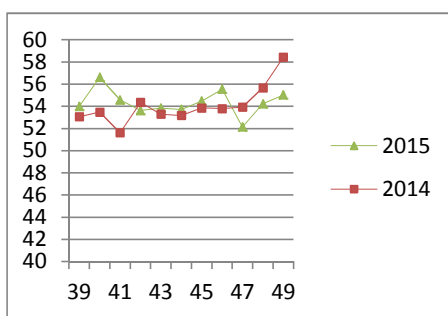
Beef A2 - Sales Price



LAMB/SHEEP

A0	463	12.44	42.97	43.05	24.27	54.05
A1	1552	13.70	52.44	52.41	45.40	56.00
A2	14647	18.92	49.57	55.03	48.58	61.27
A3	4433	22.44	52.95	54.64	34.80	61.08
A4	1062	24.86	46.51	47.10	46.19	54.19
A5	282	27.73	47.54	39.76	34.80	53.00
A6	318	25.74	47.70	41.52	37.00	65.00
AB2	440	18.37	46.70	47.37	33.80	52.89
AB3	108	24.26	47.77	49.20	44.86	54.00
B2	236	22.02	42.45	41.83	36.93	53.00
B3	83	26.11	42.29	40.41	36.87	51.00
C2	1823	23.09	39.60	40.52	34.38	50.00
C3	363	25.67	40.09	40.44	36.17	48.00
	25 810					

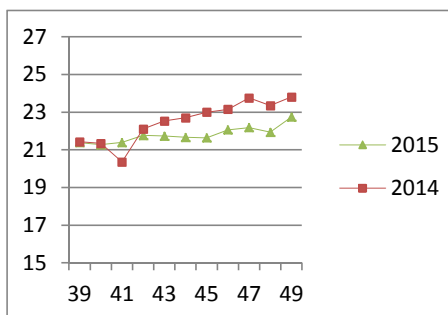
Lamb A2 - Sales Price



PIGS

Class	Units	Avg Mass	Avg Purch Price	Purch Min	Purch Max
BC	35	71.369	19.71	16.00	20.34
BO	1686	76.112	22.73	21.25	24.24
BP	4663	73.537	22.59	21.50	24.75
BR	221	76.456	21.92	20.90	23.78
BS	7	84.79	16.88	16.00	21.50
BU	19	73.932	19.16	16.50	20.69
PC	33	51.004	20.46	19.50	23.50
PO	488	46.78	23.63	21.50	24.25
PP	1456	49.01	24.13	21.50	26.75
PR	90	48.98	22.44	21.00	24.50
SAS	214	153.19	16.33	15.07	19.01
	8 912				
Hide	Feedlot	13.12			
	Veldt	13.12			
Dorper	ea	81.88			
Merino	ea	72.50			

Baconer BO - Purchase Price



THIS INFORMATION IS PROTECTED AGAINST COPYING OR DISTRIBUTION WITHOUT PRIOR PERMISSION FROM THE RMAA BOARD.

FOR ENQUIRIES, PLEASE CONTACT RMAA AT TEL (012) 349 1237/8 or priceinformation@rmaa.co.za

Disclaimer: In no event shall the RMAA be liable for any direct, special, indirect or consequential damages, or any other damages of any kind, including but not limited to loss of use, loss of profits, or loss of data, whether in an action in contract, tort (including but not limited to negligence), or otherwise, arising out of or in any way connected with the use of this information. While the RMAA takes great care in compiling the contents of this page, it is nevertheless only meant to provide non-binding general information and cannot replace detailed individual advice to help the prospective buyer make his decision. The RMAA does not guarantee that the information on these pages is up-to-date, accurate and complete.