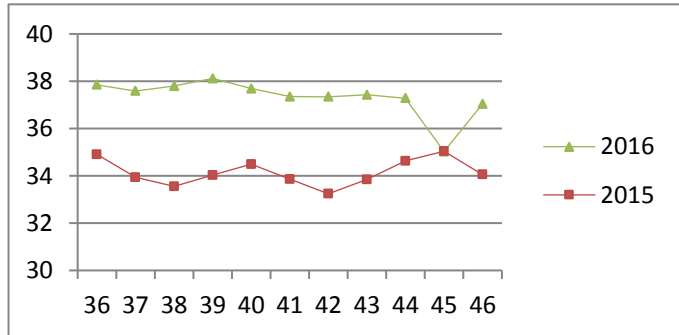


# NATIONAL SOUTH AFRICAN PRICE INFORMATION FOR WEEK 46

From 2016/11/14 To 2016/11/20

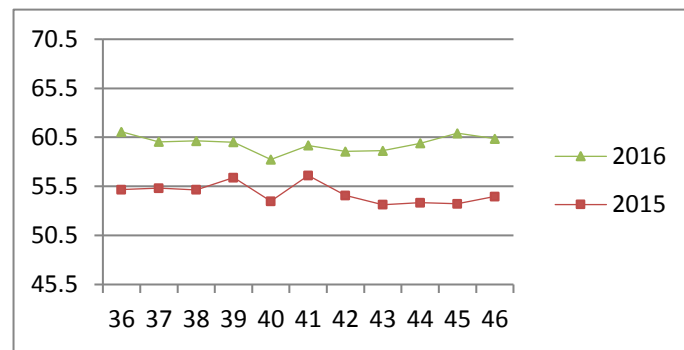
Class	Units	Avg Mass	Avg Purch Price	Avg Selling Price	Selling min	Selling max
<b>CATTLE</b>						
A2	11872	264.21	<b>37.55</b>	<b>37.05</b>	30.50	39.40
A3	1485	281.67	<b>37.55</b>	<b>37.01</b>	33.50	39.76
AB2	546	263.08	<b>35.77</b>	<b>35.76</b>	30.50	39.30
AB3	85	284.08	<b>35.98</b>	<b>35.99</b>	33.78	39.30
B2	445	241.67	<b>33.77</b>	<b>33.70</b>	28.50	36.50
B3	72	274.40	<b>33.56</b>	<b>33.53</b>	31.34	34.54
C2	1294	240.11	<b>33.13</b>	<b>33.22</b>	30.00	35.50
C3	418	280.01	<b>33.13</b>	<b>33.15</b>	26.25	35.50
16 217						

**Beef A2 - Sales Price**



Class	Units	Avg Mass	Avg Purch Price	Avg Selling Price	Selling min	Selling max
<b>LAMB/SHEEP</b>						
A0	385	13.79	<b>49.14</b>	<b>52.86</b>	48.17	58.00
A1	1259	16.42	<b>59.32</b>	<b>60.22</b>	55.00	62.00
A2	11361	20.63	<b>60.78</b>	<b>60.63</b>	52.89	62.64
A3	2536	22.79	<b>61.07</b>	<b>60.95</b>	56.05	64.42
A4	441	23.69	<b>51.71</b>	<b>55.53</b>	44.22	58.13
A5	116	24.28	<b>48.29</b>	<b>49.58</b>	43.29	56.08
A6	112	21.94	<b>45.59</b>	<b>47.98</b>	44.00	50.73
AB2	148	23.01	<b>51.79</b>	<b>53.69</b>	47.84	60.00
AB3	65	26.11	<b>50.46</b>	<b>53.44</b>	48.36	59.76
B2	333	23.44	<b>50.05</b>	<b>51.72</b>	42.00	54.04
B3	68	26.61	<b>49.63</b>	<b>50.57</b>	41.17	54.22
C2	1269	25.58	<b>46.60</b>	<b>47.31</b>	40.00	52.00
C3	370	29.39	<b>46.47</b>	<b>46.62</b>	40.00	52.00
18 463						

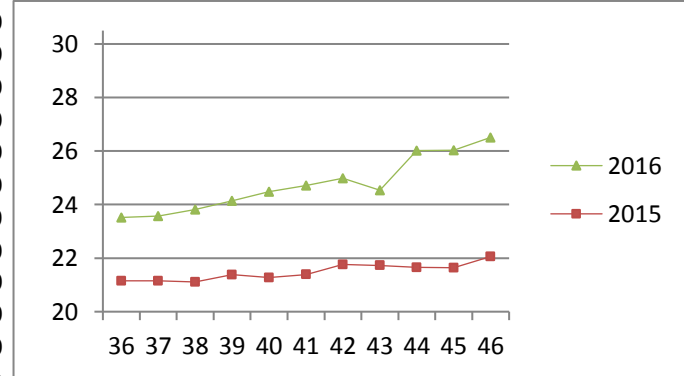
**Lamb A2 - Sales Price**



Hide	Feedlot	15.62
	Veldt	15.67
Dorper	ea	35.91
Merino	ea	81.25

Class	Units	Avg Mass	Avg Purch Price	Purch Min	Purch Max
<b>PIGS</b>					
BP	7230	72.57	<b>25.70</b>	22.30	30.00
BO	2983	74.23	<b>26.05</b>	22.30	30.00
BR	359	76.05	<b>25.62</b>	22.50	29.00
BC	31	74.69	<b>25.01</b>	18.74	29.00
BU	15	76.10	<b>20.85</b>	13.00	29.00
BS	7	78.87	<b>16.57</b>	11.00	22.00
PP	3269	51.23	<b>26.91</b>	22.50	31.49
PO	295	49.57	<b>27.22</b>	22.50	31.50
PR	38	49.55	<b>24.93</b>	18.87	29.00
PC	3	50.97	<b>21.61</b>	16.00	24.50
PS	1	56.30	<b>14.00</b>	14.00	14.00
SAB	67	118.82	<b>16.32</b>	6.00	24.00
HP	2862	84.77	<b>25.32</b>	22.30	28.00
HO	2680	86.65	<b>25.46</b>	22.30	27.99
HR	492	88.26	<b>24.59</b>	12.10	27.50
HC	50	88.87	<b>18.51</b>	15.00	22.25
HU	48	99.83	<b>19.35</b>	13.00	20.52
HS	8	92.63	<b>11.31</b>	9.40	15.50
CP	1099	59.20	<b>27.02</b>	12.45	29.98
CO	121	60.14	<b>26.33</b>	13.00	30.00
CR	61	58.63	<b>25.98</b>	13.00	27.50
CC	1	58.60	<b>16.00</b>	16.00	16.00
CU	3	62.85	<b>13.68</b>	13.00	15.00
CS	2	60.30	<b>12.94</b>	11.00	15.00
SAS	488	155.30	<b>16.93</b>	15.40	21.00
22 213					

**Baconer BO - Purchase Price**



**THIS INFORMATION IS PROTECTED AGAINST COPYING OR DISTRIBUTION WITHOUT PRIOR PERMISSION FROM THE RMAA BOARD.**

**FOR ENQUIRIES, PLEASE CONTACT RMAA AT TEL (012) 349 1237/8 or [priceinformation@rmaa.co.za](mailto:priceinformation@rmaa.co.za)**

Disclaimer: In no event shall the RMAA be liable for any direct, special, indirect or consequential damages, or any other damages of any kind, including but not limited to loss of use, loss of profits, or loss of data, whether in an action in contract, tort (including but not limited to negligence), or otherwise, arising out of or in any way connected with the use of this information. While the RMAA takes great care in compiling the contents of this page, it is nevertheless only meant to provide non-binding general information and cannot replace detailed individual advice to help the prospective buyer make his decision. The RMAA does not guarantee that the information on these pages is up-to-date, accurate and complete.