

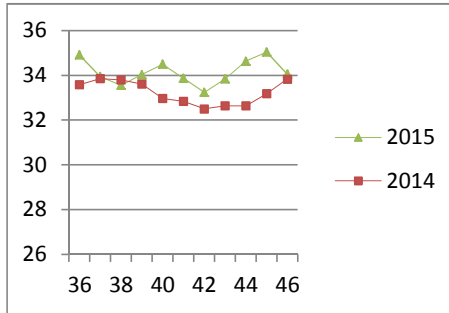
NATIONAL SOUTH AFRICAN PRICE INFORMATION FOR WEEK 46

Class Units Avg Mass Avg Purch Price Avg Selling Price Selling min Selling max From 2015/11/09 To 2015/11/15

CATTLE

Class	Units	Avg Mass	Avg Purch Price	Avg Selling Price	Selling min	Selling max
A2	10879	254.32	35.46	34.05	32.18	37.90
A3	1076	273.83	35.48	34.38	32.12	37.90
AB2	599	261.68	34.11	32.97	27.50	39.34
AB3	70	304.94	34.29	33.18	31.50	36.90
B2	468	240.13	30.86	29.97	27.19	37.90
B3	63	307.03	31.01	30.20	27.60	33.00
C2	1640	248.10	29.48	28.54	24.93	32.00
C3	225	289.02	30.16	28.74	22.65	32.00
15 020						

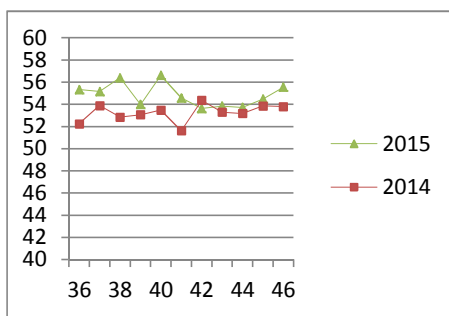
Beef A2 - Sales Price



LAMB/SHEEP

A0	202	13.25	46.84	45.43	35.00	60.47
A1	990	15.64	53.88	55.18	43.78	60.47
A2	9779	19.75	54.87	55.54	52.60	60.47
A3	1622	22.45	54.45	56.17	52.26	60.47
A4	355	22.16	47.69	49.69	48.85	57.95
A5	73	20.67	40.97	42.12	39.42	54.00
A6	97	20.39	41.46	41.32	37.70	50.00
AB2	225	19.26	47.34	49.37	38.00	52.38
AB3	53	21.27	47.69	49.64	38.00	52.60
B2	218	24.29	42.58	43.09	38.00	51.00
B3	64	24.81	42.90	44.21	38.00	48.61
C2	718	25.16	39.17	40.24	31.91	45.27
C3	228	26.68	41.56	41.90	40.00	45.00
14 624						

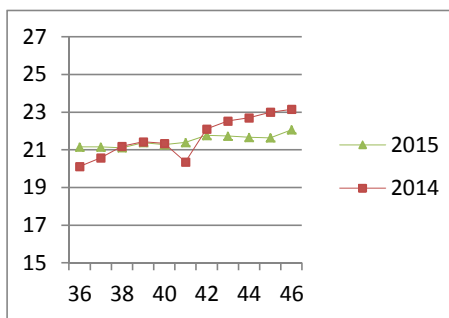
Lamb A2 - Sales Price



PIGS

Class	Units	Avg Mass	Avg Purch Price	Purch Min	Purch Max
BC	19	76.012	20.79	18.25	25.00
BO	2299	78.616	22.06	21.26	24.19
BP	4762	73.777	22.13	21.40	25.20
BR	248	82.204	21.10	20.16	23.22
BS	3	67.43	19.38	18.00	20.00
BU	5	67.16	21.43	20.00	22.00
PC	4	47.45	22.71	20.00	24.00
PO	35	49.53	23.87	22.50	25.03
PP	297	48.15	23.71	23.20	25.10
PR	8	49.35	23.79	22.25	24.00
SAS	184	161.32	16.22	15.00	18.00
7 864					
Hide	Feedlot	12.49			
	Veldt	12.17			
Dorper	ea	81.88			
Merino	ea	83.00			

Baconer BO - Purchase Price



THIS INFORMATION IS PROTECTED AGAINST COPYING OR DISTRIBUTION WITHOUT PRIOR PERMISSION FROM THE RMAA BOARD.

FOR ENQUIRIES, PLEASE CONTACT RMAA AT TEL (012) 349 1237/8 or priceinformation@rmaa.co.za

Disclaimer: In no event shall the RMAA be liable for any direct, special, indirect or consequential damages, or any other damages of any kind, including but not limited to loss of use, loss of profits, or loss of data, whether in an action in contract, tort (including but not limited to negligence), or otherwise, arising out of or in any way connected with the use of this information. While the RMAA takes great care in compiling the contents of this page, it is nevertheless only meant to provide non-binding general information and cannot replace detailed individual advice to help the prospective buyer make his decision. The RMAA does not guarantee that the information on these pages is up-to-date, accurate and complete.