

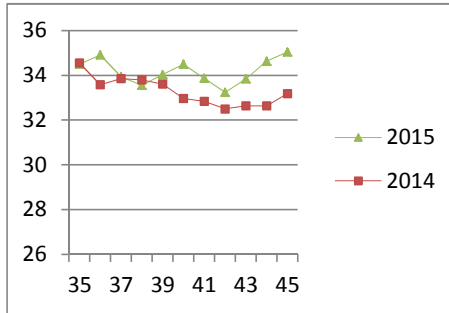
NATIONAL SOUTH AFRICAN PRICE INFORMATION FOR WEEK 45

Class Units Avg Mass Avg Purch Price Avg Selling Price Selling min Selling max From 2015/11/02 To 2015/11/08

CATTLE

Class	Units	Avg Mass	Avg Purch Price	Avg Selling Price	Selling min	Selling max
A2	11438	256.06	35.36	35.04	33.69	38.90
A3	1586	270.13	35.65	35.09	32.93	38.90
AB2	520	266.06	34.04	33.31	29.52	36.03
AB3	82	287.46	34.37	33.89	29.24	36.03
B2	369	247.20	31.18	31.20	27.22	34.90
B3	50	296.31	30.13	31.34	28.69	34.90
C2	1091	253.68	29.94	29.11	26.88	33.75
C3	204	298.56	29.81	29.41	27.16	33.00
15 340						

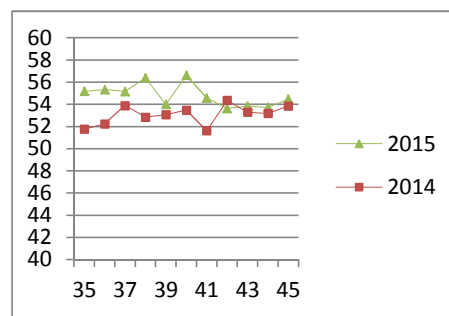
Beef A2 - Sales Price



LAMB/SHEEP

Class	Units	Avg Mass	Avg Purch Price	Avg Selling Price	Selling min	Selling max
A0	260	12.88	46.08	43.87	32.72	47.00
A1	1131	14.84	54.90	53.17	43.20	59.87
A2	10485	19.57	49.35	54.47	52.00	59.87
A3	2128	21.85	47.56	53.81	52.00	59.87
A4	459	22.73	40.66	47.56	42.11	59.87
A5	104	22.45	36.57	39.98	38.98	59.87
A6	198	23.07	33.38	40.03	39.17	47.22
AB2	168	19.87	46.67	47.41	44.66	56.95
AB3	65	22.07	46.97	47.59	44.65	56.95
B2	135	22.79	43.61	42.51	37.90	47.00
B3	25	27.30	42.44	42.05	40.94	47.00
C2	1066	24.04	41.22	40.62	37.90	45.40
C3	277	26.48	40.69	41.21	39.03	47.52
16 501						

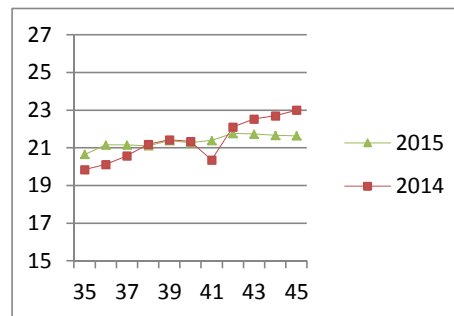
Lamb A2 - Sales Price



PIGS

Class	Units	Avg Mass	Avg Purch Price	Purch Min	Purch Max
BC	36	71.503	19.95	18.25	23.13
BO	2690	80.834	21.64	21.26	24.35
BP	4115	74.783	22.21	21.40	24.93
BR	384	83.901	20.49	20.16	23.13
BS	8	74.88	17.90	16.00	23.13
BU	7	74.371	19.71	18.00	23.13
PC	2	44.5	17.00	17.00	17.00
PO	18	49.31	23.61	23.50	24.25
PP	384	48.76	23.55	23.07	24.25
PR	5	39.95	21.41	15.50	23.63
SAS	198	140.52	16.24	16.00	16.50
7 847					
Hide	Feedlot	12.41			
	Veldt	12.27			
Dorper	ea	82.86			
Merino	ea	78.71			

Baconer BO - Purchase Price



THIS INFORMATION IS PROTECTED AGAINST COPYING OR DISTRIBUTION WITHOUT PRIOR PERMISSION FROM THE RMAA BOARD.

FOR ENQUIRIES, PLEASE CONTACT RMAA AT TEL (012) 349 1237/8 or priceinformation@rmaa.co.za

Disclaimer: In no event shall the RMAA be liable for any direct, special, indirect or consequential damages, or any other damages of any kind, including but not limited to loss of use, loss of profits, or loss of data, whether in an action in contract, tort (including but not limited to negligence), or otherwise, arising out of or in any way connected with the use of this information. While the RMAA takes great care in compiling the contents of this page, it is nevertheless only meant to provide non-binding general information and cannot replace detailed individual advice to help the prospective buyer make his decision. The RMAA does not guarantee that the information on these pages is up-to-date, accurate and complete.