

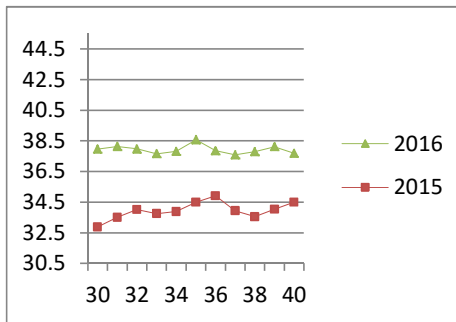
# NATIONAL SOUTH AFRICAN PRICE INFORMATION FOR WEEK 40

Class Units Avg Mass Avg Purch Price Avg Selling Price Selling min Selling max From 2016/10/03 To 2016/10/09

## CATTLE

Class	Units	Avg Mass	Avg Purch Price	Avg Selling Price	Selling min	Selling max
A2	12473	256.31	<b>37.94</b>	<b>37.71</b>	36.50	43.00
A3	1171	276.76	<b>38.03</b>	<b>37.86</b>	36.50	40.80
AB2	425	259.62	<b>36.27</b>	<b>36.82</b>	30.05	39.80
AB3	98	288.83	<b>36.02</b>	<b>36.63</b>	32.00	39.80
B2	415	696.30	<b>32.58</b>	<b>32.30</b>	29.95	36.50
B3	107	284.63	<b>33.49</b>	<b>34.62</b>	31.08	36.50
C2	1841	244.63	<b>32.20</b>	<b>33.08</b>	30.11	35.50
C3	629	281.36	<b>32.64</b>	<b>33.86</b>	30.11	35.50
	17,159					

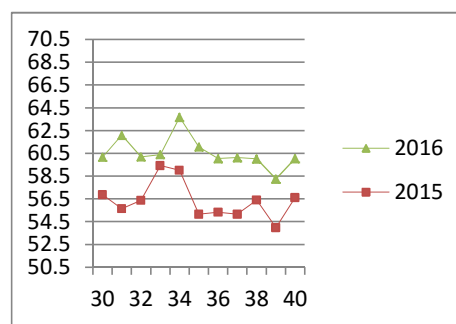
Beef A2 - Sales Price



## LAMB/SHEEP

Class	Units	Avg Mass	Avg Purch Price	Avg Selling Price	Selling min	Selling max
A0	324	13.16	<b>47.87</b>	<b>49.06</b>	41.00	58.00
A1	1809	16.16	<b>59.00</b>	<b>60.50</b>	48.00	63.00
A2	13881	20.23	<b>58.75</b>	<b>60.04</b>	55.80	71.33
A3	2701	22.46	<b>60.09</b>	<b>58.92</b>	55.95	71.25
A4	581	22.94	<b>51.34</b>	<b>51.54</b>	47.77	66.28
A5	198	22.68	<b>47.01</b>	<b>47.49</b>	39.96	52.50
A6	289	21.44	<b>46.33</b>	<b>44.99</b>	40.00	49.54
AB2	364	20.31	<b>47.85</b>	<b>50.19</b>	39.00	60.00
AB3	67	24.15	<b>46.91</b>	<b>49.19</b>	41.00	59.00
B2	337	25.59	<b>48.02</b>	<b>49.59</b>	43.60	57.00
B3	84	28.00	<b>46.13</b>	<b>49.07</b>	43.86	51.48
C2	1296	25.62	<b>47.38</b>	<b>47.31</b>	39.49	56.00
C3	374	28.46	<b>46.63</b>	<b>47.67</b>	40.76	56.00
	22,305					

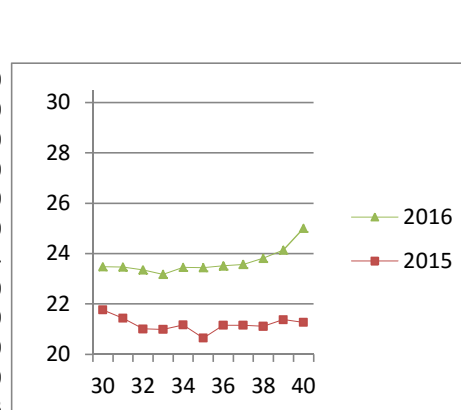
Lamb A2 - Sales Price



## PIGS

Class	Units	Avg Mass	Avg Purch Price	Purch Min	Purch Max
BP	6908	73.58	<b>24.45</b>	22.30	26.00
BO	2786	2024.45	<b>25.01</b>	21.41	255.00
BR	306	76.56	<b>23.84</b>	19.42	26.00
BC	33	74.83	<b>20.13</b>	15.00	25.30
BU	1	79.50	<b>13.00</b>	13.00	13.00
BS	3	73.80	<b>23.47</b>	22.50	25.50
PP	2371	52.09	<b>25.63</b>	22.50	27.94
PO	148	48.95	<b>24.99</b>	22.50	28.00
PR	17	44.51	<b>24.03</b>	15.30	25.50
PC	4	45.60	<b>19.91</b>	16.00	25.00
PU	1	65.70	<b>24.00</b>	24.00	24.00
PS	2	54.35	<b>22.53</b>	20.50	22.53
SAB	114	120.40	<b>15.33</b>	8.00	19.00
HP	4643	84.03	<b>23.75</b>	22.30	24.79
HO	4667	85.79	<b>23.85</b>	22.30	24.68
HR	828	87.78	<b>23.20</b>	12.10	24.00
HC	66	88.05	<b>19.03</b>	11.40	23.50
HU	10	88.97	<b>17.84</b>	13.00	23.50
HS	10	95.86	<b>13.11</b>	9.40	23.50
CP	1869	61.31	<b>25.17</b>	21.68	26.50
CO	268	62.57	<b>24.89</b>	22.40	26.50
CR	137	59.58	<b>25.89</b>	23.65	26.20
CC	4	62.68	<b>19.31</b>	16.00	25.50
CS	1	61.60	<b>11.00</b>	11.00	11.00
SAS	617	157.60	<b>15.90</b>	12.73	18.00
	25,814				

Baconer BO - Purchase Price



Hide	Feedlot	<b>15.44</b>
	Veldt	<b>15.53</b>
Dorper	ea	<b>29.00</b>
Merino	ea	<b>77.08</b>

THIS INFORMATION IS PROTECTED AGAINST COPYING OR DISTRIBUTION WITHOUT PRIOR PERMISSION FROM THE RMAA BOARD.

FOR ENQUIRIES, PLEASE CONTACT RMAA AT TEL (012) 349 1237/8 or [priceinformation@rmaa.co.za](mailto:priceinformation@rmaa.co.za)

Disclaimer: In no event shall the RMAA be liable for any direct, special, indirect or consequential damages, or any other damages of any kind, including but not limited to loss of use, loss of profits, or loss of data, whether in an action in contract, tort (including but not limited to negligence), or otherwise, arising out of or in any way connected with the use of this information. While the RMAA takes great care in compiling the contents of this page, it is nevertheless only meant to provide non-binding general information and cannot replace detailed individual advice to help the prospective buyer make his decision. The RMAA does not guarantee that the information on these pages is up-to-date, accurate and complete.