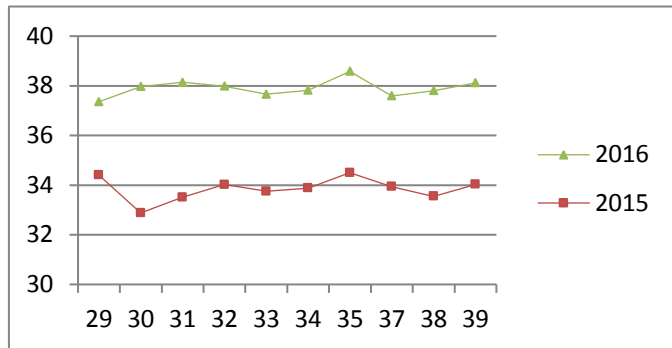


NATIONAL SOUTH AFRICAN PRICE INFORMATION FOR WEEK 39

From 2016/09/26 To 2016/10/02

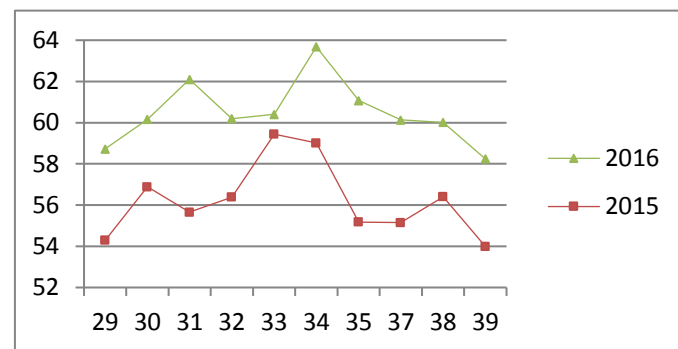
Class	Units	Avg Mass	Avg Purch Price	Avg Selling Price	Selling min	Selling max
CATTLE						
A2	13140	255.67	37.89	38.08	34.00	40.50
A3	1199	269.82	37.74	38.12	34.82	40.50
AB2	409	263.89	36.39	36.96	32.00	41.31
AB3	73	274.20	36.07	36.60	32.00	41.31
B2	349	245.71	33.64	35.32	31.95	41.51
B3	52	288.12	33.53	34.27	31.80	41.51
C2	1228	248.31	32.42	32.60	29.41	34.78
C3	457	279.34	32.73	32.90	29.41	35.50
	16 907					

Beef A2 - Sales Price



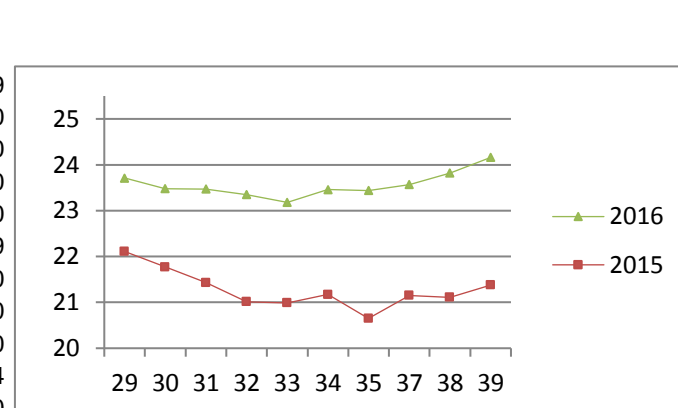
Class	Units	Avg Mass	Avg Purch Price	Avg Selling Price	Selling min	Selling max
LAMB/SHEEP						
A0	26	14.26	47.71	51.16	44.84	58.00
A1	246	15.94	58.48	57.52	52.05	63.00
A2	6237	21.57	63.36	58.24	55.72	63.50
A3	1583	24.25	63.47	57.38	55.81	62.27
A4	257	25.07	51.97	49.31	47.75	54.06
A5	34	23.53	45.60	46.43	39.92	52.77
A6	23	25.83	45.51	43.76	40.14	54.18
AB2	109	23.56	54.19	56.48	46.79	59.95
AB3	31	28.09	55.10	56.19	46.23	59.41
B2	83	25.38	50.32	51.24	43.00	53.37
B3	18	29.73	51.42	51.99	43.97	53.00
C2	732	25.63	49.35	49.33	44.23	55.22
C3	170	29.31	49.80	48.64	40.00	53.00
	9 549					

Lamb A2 - Sales Price



Class	Units	Avg Mass	Avg Purch Price	Purch Min	Purch Max
PIGS					
BP	7136	74.41	23.76	22.31	24.99
BO	2361	75.75	24.14	22.30	25.00
BR	252	76.67	23.62	22.23	24.80
BC	22	75.45	20.25	18.86	24.80
BU	5	77.71	20.00	18.53	21.00
PP	2478	51.57	24.86	22.50	27.99
PO	128	50.95	24.10	22.41	28.00
PR	14	47.59	23.07	21.99	25.00
PC	5	47.86	18.73	14.00	22.00
PU	3	46.70	17.84	12.00	17.84
PS	2	32.05	24.00	24.00	24.00
SAB	331	111.51	15.97	6.00	19.50
HP	4097	87.57	23.45	22.30	24.49
HO	4163	88.81	23.57	22.30	24.50
HR	771	89.21	23.09	12.10	24.00
HC	70	88.93	19.96	17.00	23.50
HU	7	88.80	18.46	18.46	18.46
HS	6	95.33	18.06	9.40	23.50
CP	2002	71.64	24.90	22.40	26.47
CO	702	80.90	24.94	23.50	26.50
CR	59	81.66	24.89	23.00	25.00
CC	5	79.53	24.29	20.54	25.00
CU	2	74.40	22.45	19.00	19.00
CS	2	86.00	25.00	25.00	25.00
SAS	991	145.10	16.86	13.61	19.80
	25614				

Baconer BO - Purchase Price



Hide	Feedlot	15.56
	Veldt	15.34
Dorper	ea	30.50
Merino	ea	72.78

THIS INFORMATION IS PROTECTED AGAINST COPYING OR DISTRIBUTION WITHOUT PRIOR PERMISSION FROM THE RMAA BOARD.

FOR ENQUIRIES, PLEASE CONTACT RMAA AT TEL (012) 349 1237/8 or priceinformation@rmaa.co.za

Disclaimer: In no event shall the RMAA be liable for any direct, special, indirect or consequential damages, or any other damages of any kind, including but not limited to loss of use, loss of profits, or loss of data, whether in an action in contract, tort (including but not limited to negligence), or otherwise, arising out of or in any way connected with the use of this information. While the RMAA takes great care in compiling the contents of this page, it is nevertheless only meant to provide non-binding general information and cannot replace detailed individual advice to help the prospective buyer make his decision. The RMAA does not guarantee that the information on these pages is up-to-date, accurate and complete.