

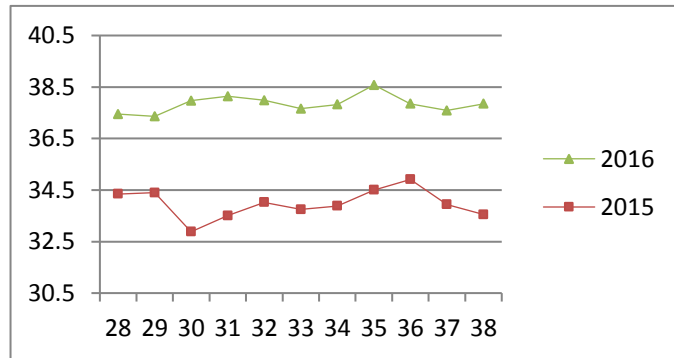
# NATIONAL SOUTH AFRICAN PRICE INFORMATION FOR WEEK 38

Class Units Avg Mass Avg Purch Price Avg Selling Price Selling min Selling max From 2016/09/19 To 2016/09/25

## CATTLE

Class	Units	Avg Mass	Avg Purch Price	Avg Selling Price	Selling min	Selling max
A2	9627	258.68	<b>37.89</b>	<b>37.80</b>	30.82	40.01
A3	969	269.58	<b>37.91</b>	<b>38.05</b>	36.50	40.00
AB2	313	257.09	<b>35.96</b>	<b>37.28</b>	31.00	40.97
AB3	72	278.20	<b>35.69</b>	<b>37.91</b>	32.00	40.97
B2	327	250.62	<b>33.03</b>	<b>33.89</b>	30.68	40.37
B3	89	286.13	<b>33.37</b>	<b>34.74</b>	32.00	40.37
C2	1459	256.79	<b>32.36</b>	<b>32.64</b>	29.00	35.50
C3	457	284.15	<b>32.63</b>	<b>33.03</b>	30.49	35.50
	13 313					

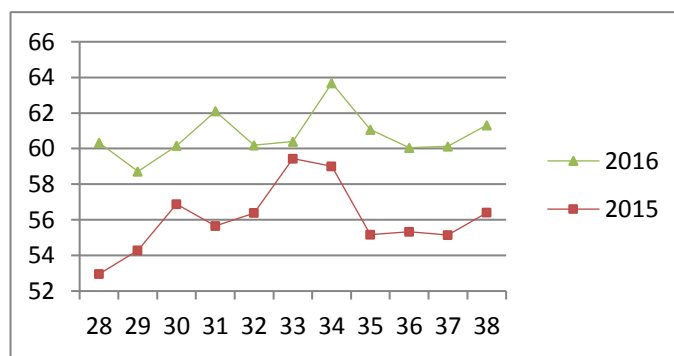
Beef A2 - Sales Price



## LAMB/SHEEP

Class	Units	Avg Mass	Avg Purch Price	Avg Selling Price	Selling min	Selling max
A0	398	14.28	<b>51.16</b>	<b>50.52</b>	44.57	55.00
A1	1779	16.68	<b>58.64</b>	<b>60.76</b>	52.62	64.00
A2	12890	19.96	<b>61.31</b>	<b>60.01</b>	55.66	63.10
A3	2537	21.87	<b>61.50</b>	<b>59.62</b>	55.80	62.71
A4	472	21.55	<b>52.39</b>	<b>52.39</b>	47.72	58.46
A5	196	22.08	<b>48.57</b>	<b>48.38</b>	42.88	54.29
A6	186	20.96	<b>47.50</b>	<b>47.80</b>	40.13	55.00
AB2	270	19.58	<b>51.83</b>	<b>52.98</b>	46.75	56.52
AB3	64	22.72	<b>52.64</b>	<b>52.75</b>	46.16	57.00
B2	407	22.41	<b>48.32</b>	<b>51.05</b>	43.52	55.12
B3	127	26.85	<b>47.78</b>	<b>49.27</b>	43.92	54.93
C2	1176	25.59	<b>48.14</b>	<b>47.56</b>	40.67	52.68
C3	503	27.49	<b>48.07</b>	<b>46.51</b>	40.47	50.00
	21 005					

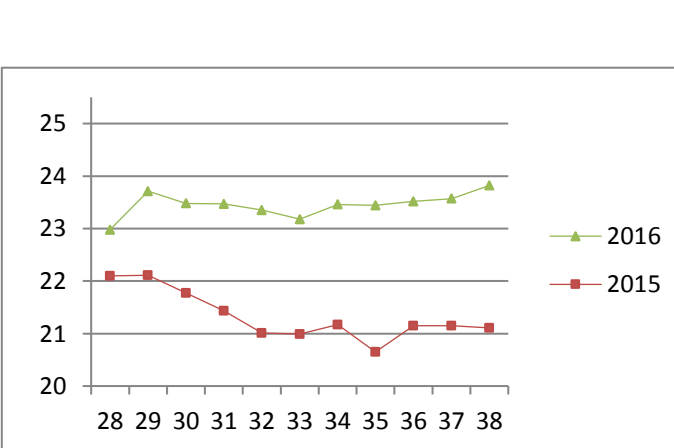
Lamb A2 - Sales Price



## PIGS

Class	Units	Avg Mass	Avg Purch Price	Purch Min	Purch Max
BP	6628	73.89	<b>23.63</b>	22.30	24.75
BO	2154	76.42	<b>23.82</b>	22.30	24.37
BR	333	74.56	<b>23.20</b>	22.00	24.00
BC	10	82.08	<b>20.30</b>	18.69	23.10
BU	1	74.50	<b>19.07</b>	19.07	19.07
BS	3	91.93	<b>21.25</b>	19.50	22.00
PP	2073	52.59	<b>25.08</b>	22.50	26.98
PO	80	51.41	<b>24.33</b>	22.67	27.00
PR	20	48.64	<b>23.42</b>	22.30	24.50
PC	3	48.00	<b>23.00</b>	23.00	23.00
PU	2	40.15	<b>18.16</b>	14.00	23.00
PS	4	40.50	<b>23.63</b>	23.00	24.00
SAB	301	105.27	<b>15.24</b>	6.00	17.50
HP	4241	88.18	<b>23.00</b>	22.00	24.08
HO	4463	89.42	<b>23.04</b>	22.00	23.82
HR	857	89.48	<b>22.61</b>	21.71	23.50
HC	59	90.23	<b>20.02</b>	18.72	23.50
HU	6	91.73	<b>18.15</b>	17.22	23.50
HS	7	95.43	<b>13.71</b>	9.40	23.50
CP	1250	61.07	<b>24.44</b>	22.40	25.49
CO	179	61.48	<b>24.21</b>	22.40	25.50
CR	18	61.05	<b>23.23</b>	22.00	24.00
CC	3	63.90	<b>22.34</b>	22.34	22.34
CU	1	61.30	<b>23.00</b>	23.00	23.00
CS	1	62.10	<b>23.00</b>	23.00	23.00
SAS	752	143.87	<b>16.42</b>	14.27	18.80
	23449				

Baconer BO - Purchase Price



Hide	Feedlot	<b>15.26</b>
	Veldt	<b>15.18</b>
Dorper	ea	<b>30.33</b>
Merino	ea	<b>76.15</b>

THIS INFORMATION IS PROTECTED AGAINST COPYING OR DISTRIBUTION WITHOUT PRIOR PERMISSION FROM THE RMAA BOARD.

FOR ENQUIRIES, PLEASE CONTACT RMAA AT TEL (012) 349 1237/8 or [priceinformation@rmaa.co.za](mailto:priceinformation@rmaa.co.za)

Disclaimer: In no event shall the RMAA be liable for any direct, special, indirect or consequential damages, or any other damages of any kind, including but not limited to loss of use, loss of profits, or loss of data, whether in an action in contract, tort (including but not limited to negligence), or otherwise, arising out of or in any way connected with the use of this information. While the RMAA takes great care in compiling the contents of this page, it is nevertheless only meant to provide non-binding general information and cannot replace detailed individual advice to help the prospective buyer make his decision. The RMAA does not guarantee that the information on these pages is up-to-date, accurate and complete.