

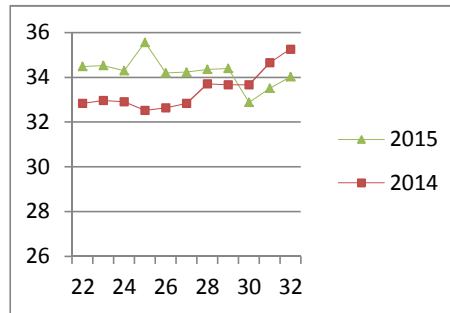
NATIONAL SOUTH AFRICAN PRICE INFORMATION FOR WEEK 32

Class Units Avg Mass Avg Purch Price Avg Selling Price Selling min Selling max From 2015/08/03 To 2015/08/09

CATTLE

Class	Units	Avg Mass	Avg Purch Price	Avg Selling Price	Selling min	Selling max
A2	7860	254.41	34.25	34.02	31.11	37.26
A3	1182	265.36	34.21	33.90	31.21	37.26
AB2	398	272.94	33.03	33.28	29.69	37.38
AB3	62	304.62	33.27	33.68	29.09	37.38
B2	212	270.79	30.71	31.01	28.00	37.38
B3	69	296.58	29.52	27.80	23.81	37.38
C2	433	262.72	28.07	28.10	27.00	33.23
C3	105	291.82	28.67	28.27	27.54	33.23
10 321						

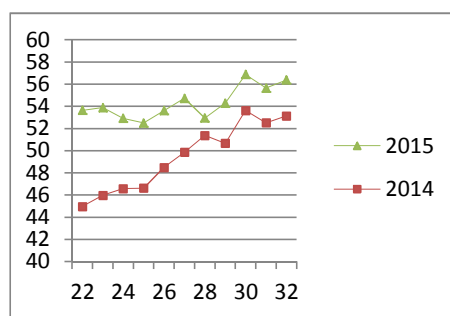
Beef A2 - Sales Price



LAMB/SHEEP

A0	222	13.66	50.07	47.68	38.18	65.88
A1	894	15.18	52.52	53.21	48.30	58.83
A2	7586	19.27	57.17	56.38	52.67	63.50
A3	1484	21.23	57.60	57.11	52.40	63.50
A4	466	20.42	47.82	47.70	45.59	63.50
A5	237	20.63	43.44	42.24	40.15	63.50
A6	384	21.42	40.70	40.30	38.18	63.50
AB2	155	21.32	48.98	48.43	42.87	63.88
AB3	50	23.75	51.28	50.17	42.85	63.88
B2	169	22.43	46.71	46.96	41.51	63.88
B3	46	27.26	45.13	45.50	42.05	50.00
C2	576	20.62	45.49	51.43	36.77	48.42
C3	145	27.56	44.48	44.48	37.22	47.52
12 414						

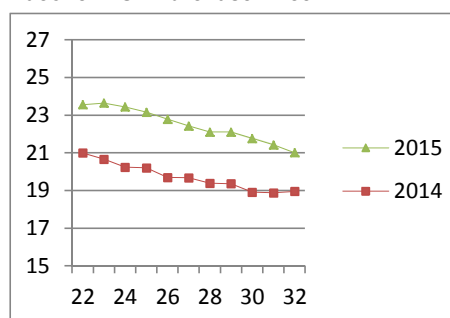
Lamb A2 - Sales Price



PIGS

Class	Units	Avg Mass	Avg Purch Price	Purch Min	Purch Max
BC	60	68.162	22.10	18.25	24.50
BO	2184	82.1	21.01	20.00	21.25
BP	3059	76.631	21.02	20.00	24.00
BR	305	85.873	20.13	18.60	20.20
BS	3	90	15.20	15.20	15.20
BU	2	88	18.00	18.00	18.00
PC	2	50	20.63	19.50	22.00
PO	12	52.767	21.44	20.19	24.50
PP	360	53.26	24.20	20.36	25.00
PR	4	44.825	21.12	20.00	21.50
SAS	185	141.75	16.00	14.50	16.90
6 176					
Hide	Feedlot	15.80			
	Veldt	15.17			
Dorper	ea	71.46			
Merino	ea	63.23			

Baconer BO - Purchase Price



THIS INFORMATION IS PROTECTED AGAINST COPYING OR DISTRIBUTION WITHOUT PRIOR PERMISSION FROM THE RMAA BOARD.

FOR ENQUIRIES, PLEASE CONTACT RMAA AT TEL (012) 349 1237/8 or priceinformation@rmaa.co.za

Disclaimer: In no event shall the RMAA be liable for any direct, special, indirect or consequential damages, or any other damages of any kind, including but not limited to loss of use, loss of profits, or loss of data, whether in an action in contract, tort (including but not limited to negligence), or otherwise, arising out of or in any way connected with the use of this information. While the RMAA takes great care in compiling the contents of this page, it is nevertheless only meant to provide non-binding general information and cannot replace detailed individual advice to help the prospective buyer make his decision. The RMAA does not guarantee that the information on these pages is up-to-date, accurate and complete.