

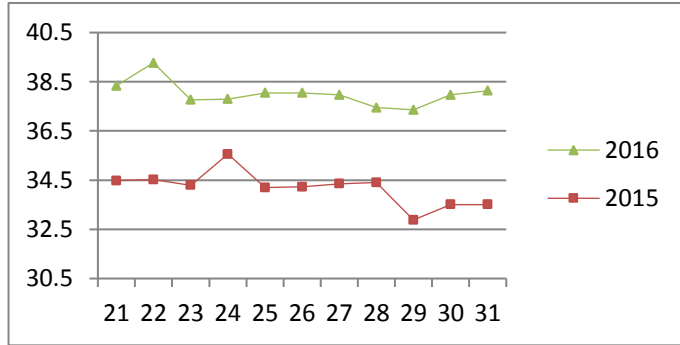
# NATIONAL SOUTH AFRICAN PRICE INFORMATION FOR WEEK 31

Class Units Avg Mass Avg Purch Price Avg Selling Price Selling min Selling max From 2016/08/01 To 2016/08/07

## CATTLE

Class	Units	Avg Mass	Avg Purch Price	Avg Selling Price	Selling min	Selling max
A2	12080	257.62	<b>38.06</b>	<b>38.14</b>	36.13	40.38
A3	1684	277.55	<b>38.01</b>	<b>38.12</b>	37.00	40.80
AB2	517	268.68	<b>36.31</b>	<b>36.34</b>	33.65	38.52
AB3	134	295.51	<b>35.84</b>	<b>36.44</b>	33.65	39.80
B2	527	266.57	<b>33.29</b>	<b>33.70</b>	29.00	38.48
B3	104	326.35	<b>32.82</b>	<b>33.27</b>	29.50	36.10
C2	1732	253.83	<b>30.51</b>	<b>30.98</b>	28.00	34.50
C3	597	286.33	<b>30.43</b>	<b>31.60</b>	28.00	34.50
17 375						

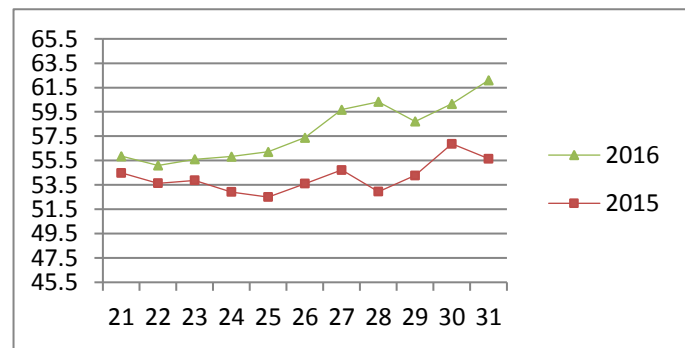
Beef A2 - Sales Price



## LAMB/SHEEP

Class	Units	Avg Mass	Avg Purch Price	Avg Selling Price	Selling min	Selling max
A0	106	14.48	<b>50.04</b>	<b>49.87</b>	46.34	58.23
A1	690	17.25	<b>59.58</b>	<b>59.80</b>	54.08	63.00
A2	11672	21.28	<b>58.56</b>	<b>62.10</b>	57.00	67.90
A3	1722	23.89	<b>57.79</b>	<b>61.82</b>	57.00	67.90
A4	306	24.50	<b>51.40</b>	<b>53.43</b>	48.00	56.18
A5	96	23.18	<b>47.64</b>	<b>50.30</b>	44.86	53.73
A6	192	21.40	<b>47.91</b>	<b>50.44</b>	44.87	51.55
AB2	132	23.80	<b>52.95</b>	<b>55.56</b>	48.00	58.31
AB3	37	26.99	<b>54.50</b>	<b>56.35</b>	49.00	59.70
B2	264	25.95	<b>46.37</b>	<b>50.11</b>	46.00	55.50
B3	36	30.10	<b>47.07</b>	<b>49.83</b>	42.00	54.35
C2	894	27.16	<b>45.64</b>	<b>48.99</b>	45.17	52.42
C3	202	29.77	<b>46.53</b>	<b>48.33</b>	45.00	53.50
16 349						

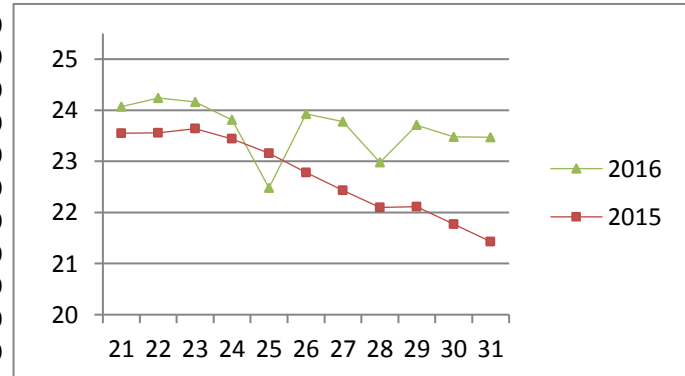
Lamb A2 - Sales Price



## PIGS

Class	Units	Avg Mass	Avg Purch Price	Purch Min	Purch Max
BP	5460	73.48	<b>23.44</b>	21.39	26.50
BO	1654	76.93	<b>23.47</b>	21.39	25.00
BR	150	76.69	<b>22.64</b>	20.49	25.00
BC	16	77.98	<b>20.52</b>	18.00	22.50
BU	4	79.85	<b>19.09</b>	17.75	22.50
PP	2633	53.13	<b>25.34</b>	21.39	26.00
PO	134	53.74	<b>25.54</b>	20.00	26.00
PR	13	52.27	<b>25.39</b>	24.00	25.50
PC	4	52.25	<b>24.57</b>	23.25	25.00
PS	1	46.90	<b>22.00</b>	22.00	22.00
SAB	250	110.13	<b>12.37</b>	6.00	17.30
HP	4954	86.77	<b>22.79</b>	21.00	23.83
HO	4851	88.55	<b>22.77</b>	21.00	23.82
HR	732	89.48	<b>22.39</b>	15.00	23.50
HC	79	89.48	<b>19.99</b>	13.30	23.50
HU	6	88.36	<b>21.23</b>	17.56	23.50
HS	4	97.60	<b>23.50</b>	23.50	23.50
CP	745	60.27	<b>23.69</b>	22.10	26.00
CO	63	60.36	<b>23.87</b>	23.45	26.00
CR	4	62.42	<b>24.26</b>	23.50	26.00
CU	1	60.00	<b>19.00</b>	19.00	19.00
CS	1	59.20	<b>11.00</b>	11.00	11.00
CS	1	59.20	<b>11.00</b>	11.00	11.00
SAS	729	144.51	<b>16.02</b>	15.00	17.00
22 489					

Baconer BO - Purchase Price



Hide	Feedlot	<b>15.47</b>
	Veldt	<b>15.49</b>
Dorper	ea	<b>39.92</b>
Merino	ea	<b>79.52</b>

THIS INFORMATION IS PROTECTED AGAINST COPYING OR DISTRIBUTION WITHOUT PRIOR PERMISSION FROM THE RMAA BOARD.

FOR ENQUIRIES, PLEASE CONTACT RMAA AT TEL (012) 349 1237/8 or [priceinformation@rmaa.co.za](mailto:priceinformation@rmaa.co.za)

Disclaimer: In no event shall the RMAA be liable for any direct, special, indirect or consequential damages, or any other damages of any kind, including but not limited to loss of use, loss of profits, or loss of data, whether in an action in contract, tort (including but not limited to negligence), or otherwise, arising out of or in any way connected with the use of this information. While the RMAA takes great care in compiling the contents of this page, it is nevertheless only meant to provide non-binding general information and cannot replace detailed individual advice to help the prospective buyer make his decision. The RMAA does not guarantee that the information on these pages is up-to-date, accurate and complete.