

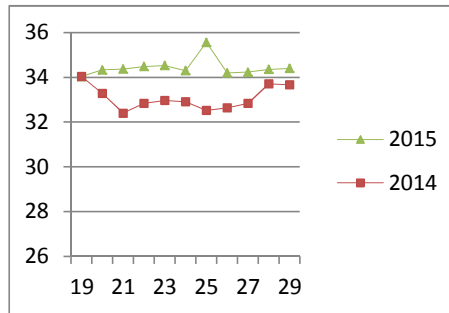
NATIONAL SOUTH AFRICAN PRICE INFORMATION FOR WEEK 29

Class Units Avg Mass Avg Purch Price Avg Selling Price Selling min Selling max From 2015/07/13 To 2015/07/19

CATTLE

Class	Units	Avg Mass	Avg Purch Price	Avg Selling Price	Selling min	Selling max
A2	4512	240.34	33.78	34.40	32.73	37.40
A3	745	255.42	34.21	34.29	32.73	37.40
AB2	244	262.05	31.82	32.72	28.00	37.40
AB3	47	271.52	31.94	29.79	28.00	37.40
B2	180	265.02	30.09	30.23	27.00	33.44
B3	94	289.23	29.42	29.60	27.00	33.44
C2	339	251.41	27.13	27.48	26.75	31.35
C3	117	284.45	28.06	27.14	25.00	31.35
6 278						

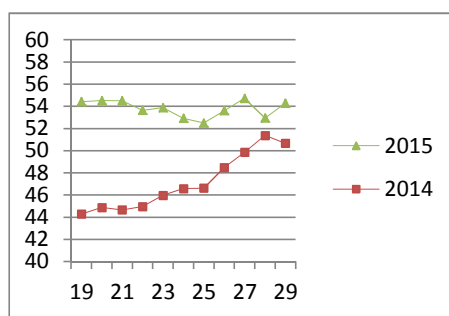
Beef A2 - Sales Price



LAMB/SHEEP

A0	111	11.24	46.80	43.12	39.00	45.00
A1	733	14.43	53.55	52.16	46.74	58.24
A2	8658	19.92	54.87	54.29	51.50	63.80
A3	1479	22.24	55.28	54.87	51.37	63.80
A4	211	21.58	47.82	48.94	44.88	63.80
A5	49	22.20	44.58	46.80	39.54	63.80
A6	41	20.51	37.52	37.27	39.00	45.00
AB2	192	22.43	48.61	50.15	42.01	61.80
AB3	28	23.16	51.06	48.00	41.31	50.52
B2	223	23.08	42.52	42.87	35.00	43.66
B3	46	26.31	41.55	43.69	41.18	44.22
C2	381	24.43	41.37	43.53	32.26	43.83
C3	75	25.41	37.86	37.76	34.95	43.83
12 227						

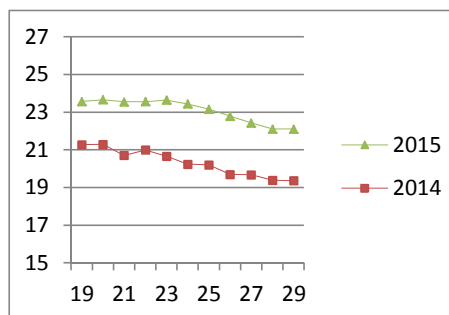
Lamb A2 - Sales Price



PIGS

Class	Units	Avg Mass	Avg Purch Price	Purch Min	Purch Max
BC	39	69.455	21.15	19.00	25.50
BO	2261	82.38	22.11	20.00	23.90
BP	3362	78.571	22.06	20.00	24.50
BR	380	83.932	21.00	20.70	22.30
BS	2	77.4	17.46	15.70	19.00
BU	8	68.35	20.77	18.60	21.00
PC	2	47.26	21.76	21.76	21.76
PO	30	47.11	23.40	22.65	25.00
PP	492	48.777	24.49	21.70	21.70
PR	5	48.82	23.20	23.20	23.20
SAS	187	135.72	15.76	15.00	16.50
6 768					
Hide	Feedlot	18.01			
	Veldt	18.06			
Dorper	ea	81.50			
Merino	ea	63.75			

Baconer BO - Purchase Price



THIS INFORMATION IS PROTECTED AGAINST COPYING OR DISTRIBUTION WITHOUT PRIOR PERMISSION FROM THE RMAA BOARD.

FOR ENQUIRIES, PLEASE CONTACT RMAA AT TEL (012) 349 1237/8 or priceinformation@rmaa.co.za

Disclaimer: In no event shall the RMAA be liable for any direct, special, indirect or consequential damages, or any other damages of any kind, including but not limited to loss of use, loss of profits, or loss of data, whether in an action in contract, tort (including but not limited to negligence), or otherwise, arising out of or in any way connected with the use of this information. While the RMAA takes great care in compiling the contents of this page, it is nevertheless only meant to provide non-binding general information and cannot replace detailed individual advice to help the prospective buyer make his decision. The RMAA does not guarantee that the information on these pages is up-to-date, accurate and complete.