

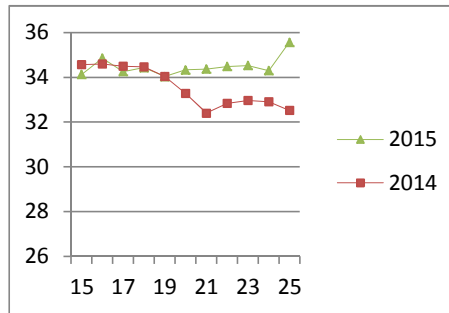
## NATIONAL SOUTH AFRICAN PRICE INFORMATION FOR WEEK 25

Class Units Avg Mass Avg Purch Price Avg Selling Price Selling min Selling max From 2015/06/15 To 2015/06/21

### CATTLE

Class	Units	Avg Mass	Avg Purch Price	Avg Selling Price	Selling min	Selling max
A2	4863	244.45	34.03	34.12	31.93	37.40
A3	726	270.98	33.84	34.07	32.00	37.40
AB2	244	251.34	31.39	32.27	25.73	37.40
AB3	42	273.09	32.15	33.49	26.50	37.40
B2	288	249.47	28.86	29.41	25.04	37.40
B3	27	266.92	29.98	29.99	25.93	37.40
C2	580	249.79	27.11	26.84	26.45	31.35
C3	139	294.03	27.30	26.93	24.71	31.35
	6 909					

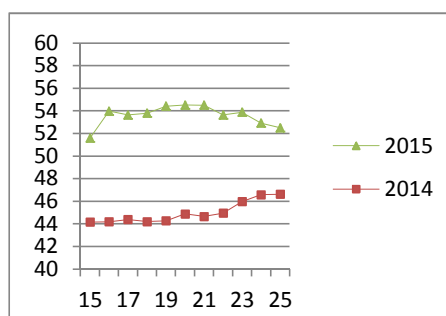
Beef A2 - Sales Price



### LAMB/SHEEP

Class	Units	Avg Mass	Avg Purch Price	Avg Selling Price	Selling min	Selling max
A0	91	11.41	46.40	45.47	42.00	46.31
A1	270	15.40	54.17	52.20	49.43	53.62
A2	4074	19.40	53.49	52.50	48.00	61.60
A3	492	23.59	53.21	53.10	47.48	61.60
A4	51	22.98	45.51	56.89	45.00	61.60
A5	10	24.75	41.50	54.19	45.00	61.60
A6	26	20.32	29.98	44.90	42.00	46.31
AB2	72	22.43	47.73	49.05	42.00	59.60
AB3	9	25.57	43.68	52.83	40.35	59.60
B2	148	24.81	38.91	37.91	38.00	59.60
B3	42	26.69	38.70	39.51	40.00	44.00
C2	411	23.40	37.33	37.45	33.50	39.59
C3	123	25.20	37.51	37.71	34.95	38.59
	5 819					

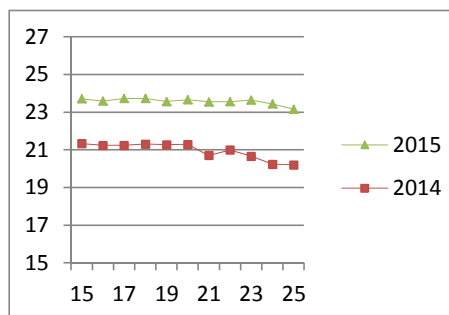
Lamb A2 - Sales Price



### PIGS

Class	Units	Avg Mass	Avg Purch Price	Purch Min	Purch Max
BC	26	69.275	22.01	16.30	26.00
BO	2298	82.203	23.16	21.59	23.90
BP	3659	75.077	22.94	21.70	25.50
BR	377	84.817	22.23	21.00	22.90
BS	16	86.905	16.31	16.20	18.00
BU	8	71.25	19.88	19.10	20.00
PC	1	47.89	24.50	24.50	24.50
PO	18	47.456	23.69	22.65	26.50
PP	594	49.347	25.31	22.84	27.00
PR	3	46.03	24.50	24.50	24.50
SAS	263	136.41	16.11	14.00	17.50
	7 263				
Hide	Feedlot	18.29			
	Veldt	18.15			
Dorper	ea	98.00			
Merino	ea	68.00			

Baconer BO - Purchase Price



THIS INFORMATION IS PROTECTED AGAINST COPYING OR DISTRIBUTION WITHOUT PRIOR PERMISSION FROM THE RMAA BOARD.

FOR ENQUIRIES, PLEASE CONTACT RMAA AT TEL (012) 349 1237/8 or [priceinformation@rmaa.co.za](mailto:priceinformation@rmaa.co.za)

Disclaimer: In no event shall the RMAA be liable for any direct, special, indirect or consequential damages, or any other damages of any kind, including but not limited to loss of use, loss of profits, or loss of data, whether in an action in contract, tort (including but not limited to negligence), or otherwise, arising out of or in any way connected with the use of this information. While the RMAA takes great care in compiling the contents of this page, it is nevertheless only meant to provide non-binding general information and cannot replace detailed individual advice to help the prospective buyer make his decision. The RMAA does not guarantee that the information on these pages is up-to-date, accurate and complete.