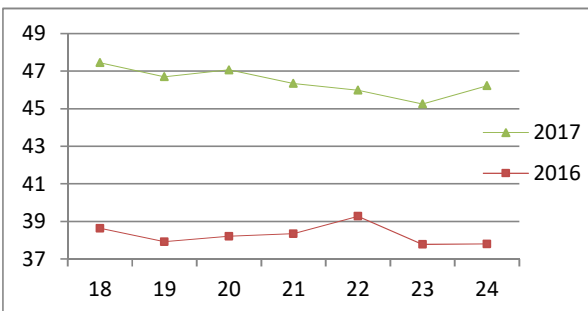


# NATIONAL SOUTH AFRICAN PRICE INFORMATION FOR WEEK Week 24

From 2017/06/12 To 2017/06/18

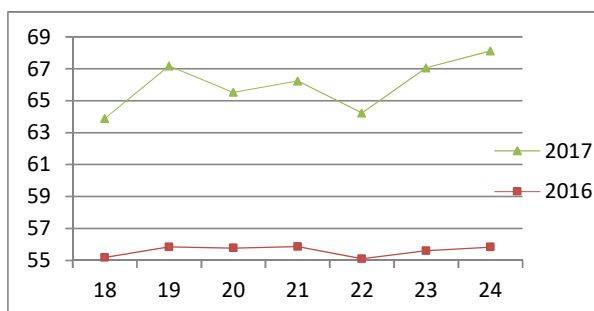
Class	Units	Avg Mass	Avg Purch Price	Avg Selling Price	Selling min	Selling max
<b>CATTLE</b>						
A2	8574	252,42	<b>47,90</b>	<b>46,23</b>	45,13	47,36
A3	936	264,62	<b>47,52</b>	<b>46,28</b>	44,94	48,31
AB2	642	263,31	<b>45,98</b>	<b>45,30</b>	43,00	48,03
AB3	130	278,49	<b>46,13</b>	<b>45,31</b>	43,22	47,79
B2	368	238,74	<b>42,09</b>	<b>41,96</b>	38,99	43,93
B3	96	264,77	<b>42,40</b>	<b>42,73</b>	39,57	45,30
C2	1691	240,04	<b>39,65</b>	<b>39,62</b>	38,12	41,45
C3	376	264,12	<b>39,72</b>	<b>40,00</b>	38,45	41,57
12 813						

**Beef A2 - Sales Price**



Class	Units	Avg Mass	Avg Purch Price	Avg Selling Price	Selling min	Selling max
<b>LAMB/SHEEP</b>						
A0	252	13,57	<b>63,53</b>	<b>60,47</b>	52,64	62,50
A1	1529	16,33	<b>73,21</b>	<b>71,44</b>	62,66	75,00
A2	10307	20,54	<b>71,05</b>	<b>68,12</b>	65,04	74,22
A3	1329	22,86	<b>69,35</b>	<b>66,78</b>	64,88	71,41
A4	302	23,03	<b>60,51</b>	<b>58,89</b>	57,27	64,81
A5	57	21,21	<b>56,16</b>	<b>53,83</b>	49,02	60,68
A6	71	19,63	<b>56,60</b>	<b>55,03</b>	48,99	61,59
AB2	125	22,15	<b>62,27</b>	<b>62,69</b>	52,03	66,69
AB3	38	25,96	<b>61,04</b>	<b>62,64</b>	51,16	66,60
B2	221	25,65	<b>53,18</b>	<b>53,42</b>	48,00	57,71
B3	73	28,36	<b>53,88</b>	<b>55,55</b>	49,48	62,00
C2	901	23,69	<b>51,40</b>	<b>52,75</b>	48,14	54,87
C3	182	26,44	<b>51,12</b>	<b>51,95</b>	44,54	54,59
15 387						

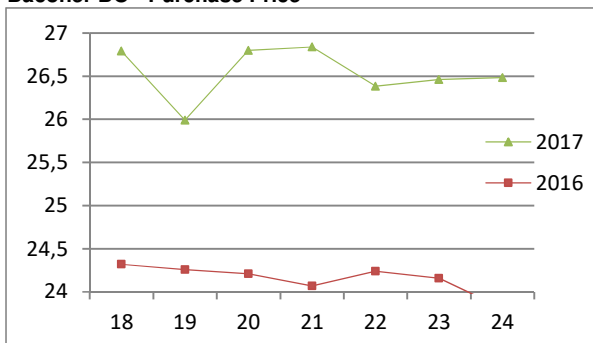
**Lamb A2 - Sales Price**



Hide	Feedlot	15,22
	Veldt	15,11
Dorper	ea	40,42
Merino	ea	101,25

PIGS	Units	Avg Mass	Avg Purch Price	Purch Min	Purch Max
PP	2511	51,70	<b>26,61</b>	25,13	29,34
PO	113	52,12	<b>26,18</b>	25,13	28,06
PR	29	50,05	<b>25,22</b>	22,01	27,50
PC	10	49,80	<b>23,38</b>	18,50	26,00
PU	2	49,65	<b>22,76</b>	22,00	23,40
PS	17	72,67	<b>17,69</b>	17,00	20,67
CP	1231	61,35	<b>27,03</b>	26,13	28,60
CO	167	62,48	<b>26,59</b>	26,11	27,42
CR	29	61,83	<b>26,38</b>	25,92	26,50
CC	2	62,00	<b>25,60</b>	25,60	25,60
CU	1	59,50	<b>18,50</b>	18,50	18,50
BP	6224	73,20	<b>26,27</b>	24,45	27,63
BO	2116	75,88	<b>26,48</b>	25,46	28,03
BR	213	72,26	<b>25,75</b>	24,18	27,54
BC	12	74,94	<b>22,35</b>	20,67	25,60
BU	7	75,09	<b>26,00</b>	19,88	28,00
BS	6	84,82	<b>25,73</b>	22,00	28,00
HP	3894	85,47	<b>25,52</b>	24,50	26,19
HO	4866	87,72	<b>25,48</b>	24,50	26,18
HR	750	90,70	<b>24,78</b>	24,48	25,09
HC	69	89,99	<b>21,42</b>	20,09	25,91
HU	10	84,80	<b>23,46</b>	19,75	28,00
HS	5	93,46	<b>20,41</b>	18,00	24,50
SAU	699	140,89	<b>19,33</b>	16,11	23,14
SAB	155	110,20	<b>21,35</b>	15,03	23,91
23 138					

**Baconer BO - Purchase Price**



**THIS INFORMATION IS PROTECTED AGAINST COPYING OR DISTRIBUTION WITHOUT PRIOR PERMISSION FROM THE RMAA BOARD.**

**FOR ENQUIRIES, PLEASE CONTACT RMAA AT TEL (012) 349 1237/8 or [priceinformation@rmaa.co.za](mailto:priceinformation@rmaa.co.za)**

Disclaimer: In no event shall the RMAA be liable for any direct, special, indirect or consequential damages, or any other damages of any kind, including but not limited to loss of use, loss of profits, or loss of data, whether in an action in contract, tort (including but not limited to negligence), or otherwise, arising out of or in any way connected with the use of this information. While the RMAA takes great care in compiling the contents of this page, it is nevertheless only meant to provide non-binding general information and cannot replace detailed individual advice to help the prospective buyer make his decision. The RMAA does not guarantee that the information on these pages is up-to-date, accurate and complete.