

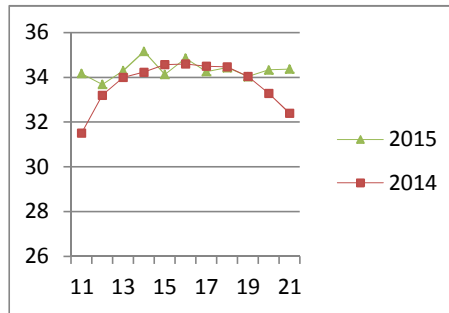
NATIONAL SOUTH AFRICAN PRICE INFORMATION FOR WEEK 21

Class Units Avg Mass Avg Purch Price Avg Selling Price Selling min Selling max From 2015/05/18 To 2015/05/24

CATTLE

Class	Units	Avg Mass	Avg Purch Price	Avg Selling Price	Selling min	Selling max
A2	2973	260.43	34.08	34.36	31.22	37.95
A3	994	255.93	34.50	34.86	31.49	37.95
AB2	101	231.99	30.51	31.39	25.73	37.95
AB3	38	255.55	31.59	32.25	26.50	37.95
B2	105	233.30	26.21	28.07	25.04	37.95
B3	92	264.81	28.06	29.10	25.93	37.95
C2	481	254.67	27.07	26.92	26.00	31.35
C3	133	283.19	27.53	27.39	24.71	31.35
	4 917					

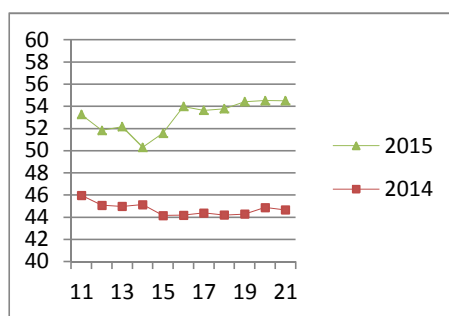
Beef A2 - Sales Price



LAMB/SHEEP

Class	Units	Avg Mass	Avg Purch Price	Avg Selling Price	Selling min	Selling max
A0	82	13.05	45.92	43.72	40.00	44.66
A1	241	14.39	53.20	51.84	49.49	52.56
A2	3669	19.45	54.42	54.50	51.00	61.60
A3	557	21.55	54.78	55.12	51.00	61.60
A4	79	19.60	49.89	50.06	49.05	61.60
A5	7	23.21	43.57	47.83	44.00	61.60
A6	37	19.49	42.29	42.82	40.00	44.66
AB2	54	23.55	48.38	50.30	43.94	59.60
AB3	2	27.37	48.96	55.42	51.00	59.60
B2	46	24.92	36.76	38.88	27.97	40.38
B3	1	27.70	38.50	39.00	39.00	39.00
C2	311	24.74	37.19	36.54	34.95	38.16
C3	83	26.45	37.22	35.85	34.95	39.50
	5 169					

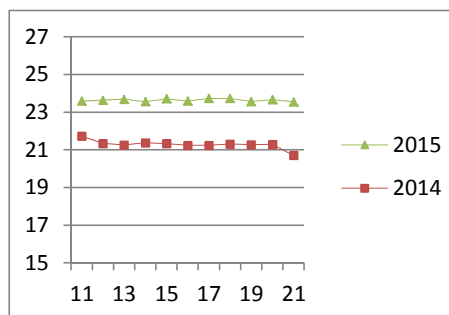
Lamb A2 - Sales Price



PIGS

Class	Units	Avg Mass	Avg Purch Price	Purch Min	Purch Max
BC	22	76.136	20.58	19.75	21.90
BO	2163	82.052	23.55	23.00	23.90
BP	3554	76.771	23.56	23.00	26.50
BR	284	83.606	22.60	22.40	23.30
BS	4	84.948	17.77	17.70	18.00
BU	7	70.27	19.00	19.00	19.00
PC	1	47.89	24.50	24.50	24.50
PO	38	49.873	24.15	22.65	26.50
PP	678	50.326	25.44	23.50	26.50
PR	3	46.03	24.50	24.50	24.50
SAS	182	139.76	17.07	15.49	19.50
	6 936				
Hide	Feedlot	18.38			
	Veldt	18.38			
Dorper	ea	98.00			
Merino	ea	67.00			

Baconer BO - Purchase Price



THIS INFORMATION IS PROTECTED AGAINST COPYING OR DISTRIBUTION WITHOUT PRIOR PERMISSION FROM THE RMAA BOARD.

FOR ENQUIRIES, PLEASE CONTACT RMAA AT TEL (012) 349 1237/8 or priceinformation@rmaa.co.za

Disclaimer: In no event shall the RMAA be liable for any direct, special, indirect or consequential damages, or any other damages of any kind, including but not limited to loss of use, loss of profits, or loss of data, whether in an action in contract, tort (including but not limited to negligence), or otherwise, arising out of or in any way connected with the use of this information. While the RMAA takes great care in compiling the contents of this page, it is nevertheless only meant to provide non-binding general information and cannot replace detailed individual advice to help the prospective buyer make his decision. The RMAA does not guarantee that the information on these pages is up-to-date, accurate and complete.