

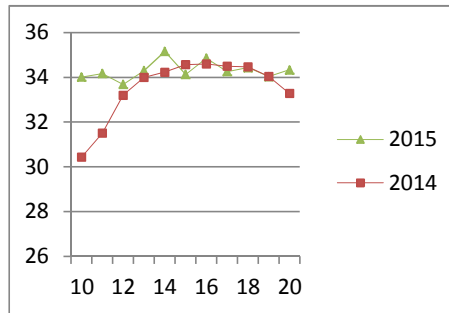
NATIONAL SOUTH AFRICAN PRICE INFORMATION FOR WEEK 20

Class Units Avg Mass Avg Purch Price Avg Selling Price Selling min Selling max From 2015/05/11 To 2015/05/17

CATTLE

Class	Units	Avg Mass	Avg Purch Price	Avg Selling Price	Selling min	Selling max
A2	4702	254.87	34.26	34.33	24.00	37.95
A3	817	263.15	34.64	34.65	31.49	37.95
AB2	342	238.97	31.63	32.08	24.00	37.95
AB3	42	292.48	31.69	32.07	24.00	37.95
B2	281	247.78	27.30	28.60	24.00	37.95
B3	17	288.59	28.82	29.38	25.93	37.95
C2	649	252.69	26.63	26.54	24.00	29.15
C3	156	286.22	27.20	26.99	24.00	29.15
	7 006					

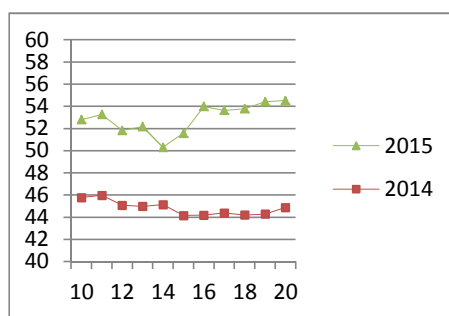
Beef A2 - Sales Price



LAMB/SHEEP

Class	Units	Avg Mass	Avg Purch Price	Avg Selling Price	Purch Min	Purch Max
A0	193	13.49	46.74	44.02	40.00	44.66
A1	470	15.79	54.15	53.49	49.49	54.10
A2	5277	19.32	54.39	54.52	51.00	63.25
A3	506	21.47	56.09	55.96	51.00	63.25
A4	41	17.06	49.14	49.97	47.89	63.25
A5	5	18.78	45.67	43.91	43.88	44.00
A6	32	17.19	46.39	43.95	40.00	44.66
AB2	191	21.69	46.01	46.31	44.00	61.25
AB3	7	30.54	48.23	50.13	50.01	51.00
B2	151	22.08	38.50	48.94	36.01	61.25
B3	12	29.77	38.43	40.00	38.50	40.13
C2	436	23.68	39.19	38.23	34.95	42.35
C3	121	26.42	39.34	38.06	34.95	42.27
	7 442					

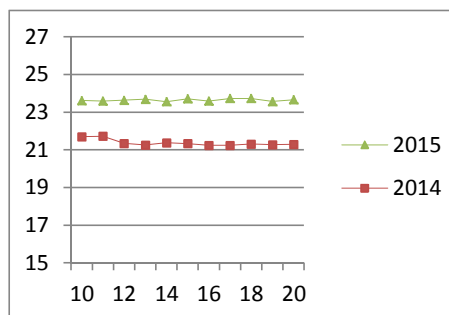
Lamb A2 - Sales Price



PIGS

Class	Units	Avg Mass	Avg Purch Price	Purch Min	Purch Max
BC	27	76.631	20.47	19.75	21.90
BO	2063	81.45	23.66	23.20	26.00
BP	3739	76.929	23.72	23.20	26.50
BR	258	83.06	22.62	22.40	23.30
BS	20	87.322	17.71	17.70	18.00
BU	7	70.3	19.00	19.00	19.00
PC	1	47.98	24.50	24.50	24.50
PO	43	50.236	24.44	22.65	26.50
PP	661	50.415	25.45	23.50	27.00
PR	3	46.03	24.50	24.50	24.50
SAS	261	152.5	17.47	15.49	19.49
	7 083				
Hide	Feedlot	18.42			
	Veldt	18.30			
Dorper	ea	94.00			
Merino	ea	67.80			

Baconer BO - Purchase Price



THIS INFORMATION IS PROTECTED AGAINST COPYING OR DISTRIBUTION WITHOUT PRIOR PERMISSION FROM THE RMAA BOARD.

FOR ENQUIRIES, PLEASE CONTACT RMAA AT TEL (012) 349 1237/8 or priceinformation@rmaa.co.za

Disclaimer: In no event shall the RMAA be liable for any direct, special, indirect or consequential damages, or any other damages of any kind, including but not limited to loss of use, loss of profits, or loss of data, whether in an action in contract, tort (including but not limited to negligence), or otherwise, arising out of or in any way connected with the use of this information. While the RMAA takes great care in compiling the contents of this page, it is nevertheless only meant to provide non-binding general information and cannot replace detailed individual advice to help the prospective buyer make his decision. The RMAA does not guarantee that the information on these pages is up-to-date, accurate and complete.