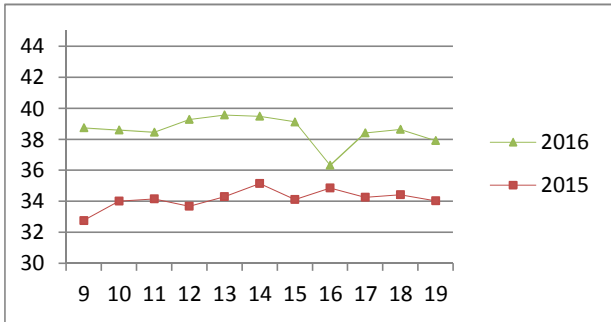


NATIONAL SOUTH AFRICAN PRICE INFORMATION FOR WEEK 19

From 2016/05/09 To 2016/05/15

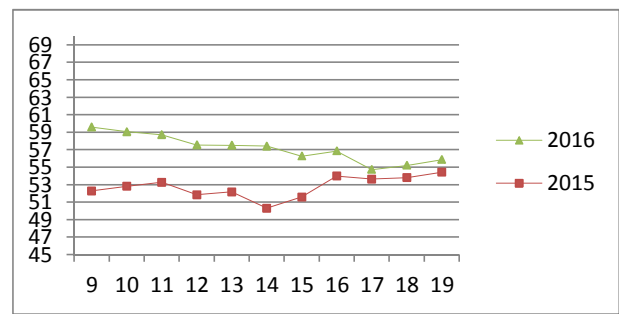
Class	Units	Avg Mass	Avg Purch Price	Avg Selling Price	Selling min	Selling max
CATTLE						
A2	10500	262.03	38.15	37.92	37.99	40.90
A3	1668	275.16	38.46	38.21	37.93	40.90
AB2	713	255.76	36.25	36.03	36.02	40.50
AB3	115	297.42	36.72	35.97	33.81	39.00
B2	567	263.70	32.39	32.22	31.98	35.00
B3	107	278.71	32.04	32.07	27.85	35.05
C2	2477	252.53	27.79	29.19	27.16	33.30
C3	746	282.52	28.18	29.20	27.16	33.30
	16 893					

Beef A2 - Sales Price



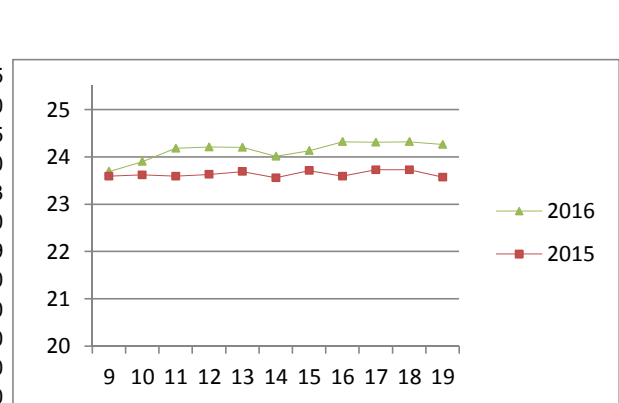
Class	Units	Avg Mass	Avg Purch Price	Avg Selling Price	Selling min	Selling max
LAMB/SHEEP						
A0	92	12.22	43.75	44.63	35.24	52.00
A1	679	13.44	53.61	52.77	47.00	60.00
A2	10742	19.80	56.77	55.85	53.00	62.84
A3	1910	21.59	56.37	55.94	53.00	60.43
A4	334	22.03	48.12	49.09	47.48	59.00
A5	70	23.08	42.98	42.41	36.00	53.00
A6	87	20.43	39.38	41.49	39.58	50.00
AB2	152	21.26	47.56	49.17	40.00	55.59
AB3	104	23.01	48.24	49.67	39.00	56.44
B2	277	24.12	41.43	43.66	39.00	55.00
B3	123	26.50	41.11	43.55	39.00	48.00
C2	1514	22.79	39.85	40.63	38.00	45.00
C3	389	25.94	39.67	40.40	38.00	45.00
	16 473					

Lamb A2 - Sales Price



Class	Units	Avg Mass	Avg Purch Price	Purch Min	Purch Max
PIGS					
BP	4751	73.63	24.26	23.62	26.75
BO	2185	75.09	24.26	23.34	25.00
BR	240	76.38	23.80	23.00	24.65
BC	16	73.89	19.08	17.47	22.00
BU	1	79.54	18.93	18.93	18.93
BS	1	79.20	20.00	20.00	20.00
PP	1193	46.72	25.12	22.89	27.19
PO	186	43.36	25.16	22.53	27.20
PR	35	45.65	24.40	20.00	25.50
PC	14	42.24	18.63	16.00	20.50
PU	3	38.65	17.25	14.00	19.50
PS	2	29.50	16.19	12.00	18.50
SAS	94	106.45	10.98	8.00	18.00
HP	3034	86.87	24.05	24.00	24.12
HO	4333	87.29	24.00	24.00	24.09
HR	933	89.81	23.45	22.90	24.00
HC	87	90.37	19.61	15.00	24.00
HU	11	92.35	18.34	13.00	24.00
HS	9	98.43	19.47	16.60	24.00
CP	624	60.79	25.11	24.00	25.80
CO	131	61.11	24.80	24.00	25.60
CR	16	60.21	24.70	23.10	25.00
CC	2	59.49	17.87	16.00	19.58
CU	1	55.48	24.25	24.25	24.25
CS	2	60.40	21.00	21.00	21.00
SAU	361	147.56	15.99	15.00	21.00
	18 265				

Baconer BO - Purchase Price



Hide	Feedlot	14.98
	Veldt	14.91
Dorper	ea	54.09
Merino	ea	86.98

THIS INFORMATION IS PROTECTED AGAINST COPYING OR DISTRIBUTION WITHOUT PRIOR PERMISSION FROM THE RMAA BOARD.

FOR ENQUIRIES, PLEASE CONTACT RMAA AT TEL (012) 349 1237/8 or priceinformation@rmaa.co.za

Disclaimer: In no event shall the RMAA be liable for any direct, special, indirect or consequential damages, or any other damages of any kind, including but not limited to loss of use, loss of profits, or loss of data, whether in an action in contract, tort (including but not limited to negligence), or otherwise, arising out of or in any way connected with the use of this information. While the RMAA takes great care in compiling the contents of this page, it is nevertheless only meant to provide non-binding general information and cannot replace detailed individual advice to help the prospective buyer make his decision. The RMAA does not guarantee that the information on these pages is up-to-date, accurate and complete.