

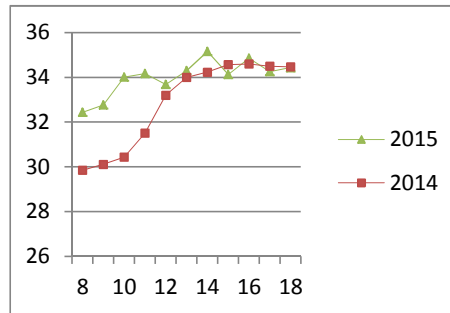
NATIONAL SOUTH AFRICAN PRICE INFORMATION FOR WEEK 18

Class Units Avg Mass Avg Purch Price Avg Selling Price Selling min Selling max From 2015/04/27 To 2015/05/03

CATTLE

Class	Units	Avg Mass	Avg Purch Price	Avg Selling Price	Selling min	Selling max
A2	3967	258.66	33.58	34.43	28.50	38.50
A3	598	255.24	34.43	34.92	32.53	38.50
AB2	254	247.20	31.96	32.48	24.00	38.50
AB3	38	300.27	32.22	32.79	28.99	38.50
B2	168	246.52	29.14	29.22	24.00	38.50
B3	14	320.03	29.18	29.55	25.93	38.50
C2	436	251.05	26.58	26.46	24.00	29.15
C3	144	304.88	27.41	26.83	24.00	29.15
	5 619					

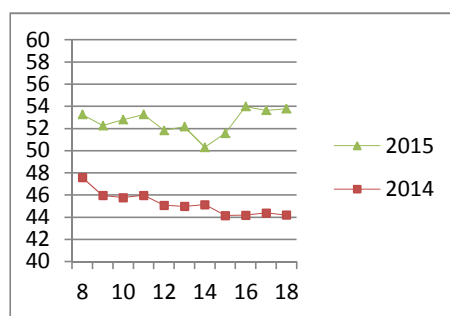
Beef A2 - Sales Price



LAMB/SHEEP

A0	150	13.14	43.32	41.43	35.00	44.66
A1	525	15.03	51.06	50.00	46.00	63.25
A2	5575	18.63	52.71	53.79	50.00	63.25
A3	564	21.24	53.72	53.32	50.00	63.25
A4	47	20.37	50.57	47.29	45.57	51.91
A5	7	21.03	45.61	41.88	38.54	44.00
A6	21	19.80	44.33	41.39	35.00	44.66
AB2	108	18.50	44.90	43.08	36.00	61.25
AB3	7	27.30	43.18	42.66	36.00	49.50
B2	49	22.85	38.31	39.75	34.00	61.25
B3	31	30.44	36.83	39.98	34.00	61.25
C2	638	22.51	37.17	38.03	34.00	42.35
C3	101	26.16	37.05	36.18	31.02	42.35
	7 823					

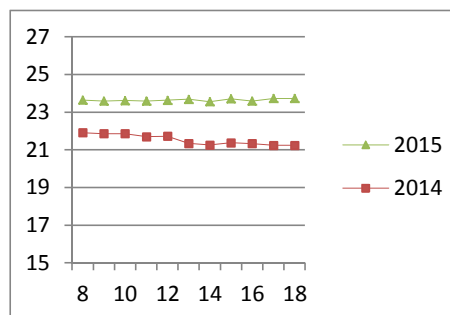
Lamb A2 - Sales Price



PIGS

Class	Units	Avg Mass	Avg Purch Price	Purch Min	Purch Max
BC	32	74.21	21.03	19.75	21.90
BO	2191	80.375	23.73	23.20	24.78
BP	4382	75.207	23.87	23.20	26.50
BR	305	84.083	22.62	22.45	24.11
BS	7	88.086	17.74	17.70	18.00
BU	11	71.627	19.60	19.00	20.60
PC	1	51.4	15.50	15.50	15.50
PO	47	51.68	24.75	22.65	26.50
PP	781	51.652	25.50	24.31	27.00
PR	4	44.8	18.50	18.50	18.50
SAS	364	130.46	16.89	15.49	18.00
	8 125				
Hide	Feedlot	18.25			
	Veldt	18.08			
Dorper	ea	95.00			
Merino	ea	63.33			

Baconer BO - Purchase Price



THIS INFORMATION IS PROTECTED AGAINST COPYING OR DISTRIBUTION WITHOUT PRIOR PERMISSION FROM THE RMAA BOARD.

FOR ENQUIRIES, PLEASE CONTACT RMAA AT TEL (012) 349 1237/8 or priceinformation@rmaa.co.za

Disclaimer: In no event shall the RMAA be liable for any direct, special, indirect or consequential damages, or any other damages of any kind, including but not limited to loss of use, loss of profits, or loss of data, whether in an action in contract, tort (including but not limited to negligence), or otherwise, arising out of or in any way connected with the use of this information. While the RMAA takes great care in compiling the contents of this page, it is nevertheless only meant to provide non-binding general information and cannot replace detailed individual advice to help the prospective buyer make his decision. The RMAA does not guarantee that the information on these pages is up-to-date, accurate and complete.