

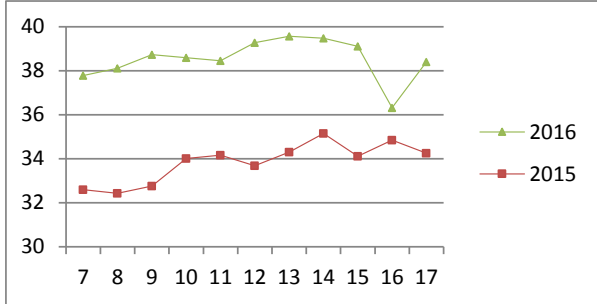
NATIONAL SOUTH AFRICAN PRICE INFORMATION FOR WEEK 17

From 2016/04/25 To 2016/05/01

CATTLE

Class	Units	Avg Mass	Avg Purch Price	Avg Selling Price	Selling min	Selling max
A2	11702	258.36	38.41	38.40	31.00	41.50
A3	1966	278.32	38.15	38.37	35.00	41.50
AB2	535	258.94	36.29	36.95	32.00	41.48
AB3	131	270.26	36.34	37.32	32.00	41.48
B2	458	250.68	31.79	33.05	27.50	36.73
B3	96	274.93	32.30	33.37	28.50	37.79
C2	1970	248.76	28.39	29.34	26.00	32.00
C3	671	273.24	29.31	30.34	26.00	32.00
17 529						

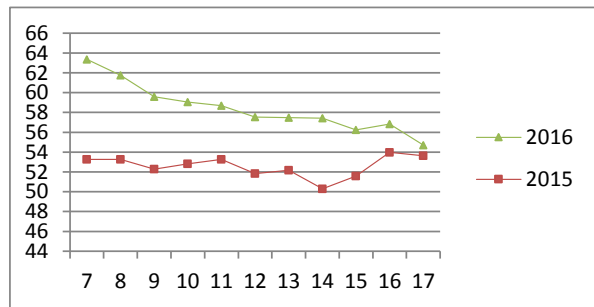
Beef A2 - Sales Price



LAMB/SHEEP

A0	159	12.69	42.86	44.24	28.26	46.77
A1	733	15.07	53.09	52.70	46.00	59.27
A2	16550	20.51	53.55	54.71	51.52	68.00
A3	3764	22.27	52.21	54.65	51.72	68.00
A4	497	22.94	45.19	48.67	46.00	58.00
A5	96	23.62	42.22	43.89	38.50	53.98
A6	141	22.07	39.62	41.21	38.00	50.66
AB2	153	21.23	46.14	48.64	40.00	56.27
AB3	44	23.63	43.34	47.36	43.00	52.50
B2	141	24.65	39.37	42.30	39.00	46.34
B3	42	26.39	39.88	41.91	37.00	55.00
C2	988	23.75	35.61	37.70	35.00	41.21
C3	390	25.02	36.61	36.48	31.00	40.00
23 698						

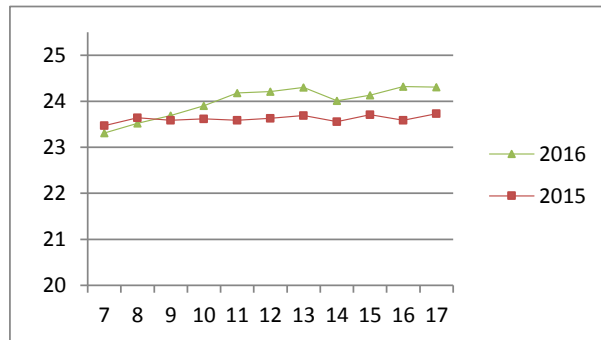
Lamb A2 - Sales Price



PIGS

		Avg Purch Price	Purch Min	Purch Max		
BP	4847	73.993	24.20	23.39	26.75	
BO	2053	74.8807	24.31	23.45	24.84	
BR	281	76.5789	23.91	16.00	24.50	
BC	30	75.6527	21.24	19.50	24.50	
BU	5	73.548	21.88	18.72	24.50	
BS	1	77.80	24.50	24.50	24.50	
PP	773	49.69	25.26	23.50	27.20	
PO	93	47.08	25.29	23.50	27.20	
PR	14	49.01	23.58	23.10	24.50	
PC	5	40.58	23.82	23.50	24.00	
SAS	21	118.93	14.19	6.00	17.40	
HP	1650	85.46	23.94	23.48	24.50	
HO	1735	88.01	24.00	23.50	24.50	
HR	503	89.7	23.49	23.12	24.00	
HC	49	89.13	19.56	19.56	19.56	
HU	10	88.55	17.88	10.40	18.67	
HS	1	83.6	9.40	9.40	9.40	
CP	392	59.76	24.27	24.02	26.00	
CO	134	60.46	24.42	23.57	26.00	
CR	30	59.41	23.64	23.00	24.50	
CU	1	58.39	18.72	18.72	18.72	
SAS	237	157.51	16.75	14.95	19.02	
12 865						

Baconer BO - Purchase Price



Hide	Feedlot	14.82
	Veldt	14.82
Dorper	ea	60.00
Merino	ea	91.08

THIS INFORMATION IS PROTECTED AGAINST COPYING OR DISTRIBUTION WITHOUT PRIOR PERMISSION FROM THE RMAA BOARD.

FOR ENQUIRIES, PLEASE CONTACT RMAA AT TEL (012) 349 1237/8 or priceinformation@rmaa.co.za

Disclaimer: In no event shall the RMAA be liable for any direct, special, indirect or consequential damages, or any other damages of any kind, including but not limited to loss of use, loss of profits, or loss of data, whether in an action in contract, tort (including but not limited to negligence), or otherwise, arising out of or in any way connected with the use of this information. While the RMAA takes great care in compiling the contents of this page, it is nevertheless only meant to provide non-binding general information and cannot replace detailed individual advice to help the prospective buyer make his decision. The RMAA does not guarantee that the information on these pages is up-to-date, accurate and complete.