

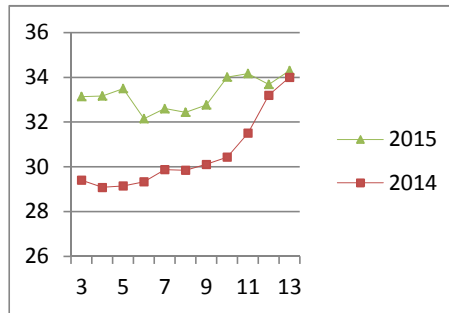
NATIONAL SOUTH AFRICAN PRICE INFORMATION FOR WEEK 13

Class Units Avg Mass Avg Purch Price Avg Selling Price Selling min Selling max From 2015/03/23 To 2015/03/29

CATTLE

Class	Units	Avg Mass	Avg Purch Price	Avg Selling Price	Selling min	Selling max
A2	4145	239.73	34.00	34.30	25.50	37.95
A3	832	259.72	34.15	34.29	32.08	37.95
AB2	232	225.87	29.95	31.25	22.00	37.95
AB3	41	257.70	31.03	34.60	28.50	37.95
B2	296	236.95	27.54	26.83	19.00	37.95
B3	35	262.47	26.41	27.42	22.00	37.95
C2	856	235.91	25.10	24.77	22.00	25.46
C3	155	274.78	25.22	24.07	22.00	24.92
6 592						

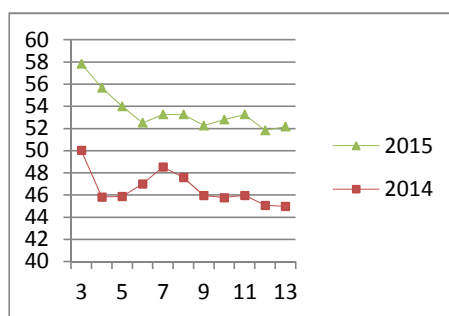
Beef A2 - Sales Price



LAMB/SHEEP

A0	68	13.60	42.10	42.98	39.00	43.68
A1	416	15.85	50.75	50.61	48.11	62.70
A2	4467	19.20	51.33	52.17	48.54	62.70
A3	649	22.53	50.89	51.02	49.14	62.70
A4	24	19.37	45.84	47.71	46.52	62.70
A5	89	18.50	46.98	47.97	45.52	48.00
A6	106	31.98	40.39	41.69	39.00	43.68
AB2	134	15.38	45.21	41.36	38.50	60.70
AB3	5	23.73	45.11	48.63	40.00	60.70
B2	96	21.70	36.80	36.23	35.45	36.68
B3	13	30.39	35.32	35.38	35.30	36.00
C2	415	23.14	35.57	36.37	32.30	36.79
C3	117	27.26	35.27	36.21	32.30	36.64
6 599						

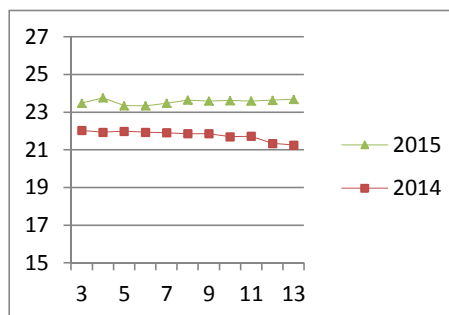
Lamb A2 - Sales Price



PIGS

Class	Units	Avg Mass	Avg Purch Price	Purch Min	Purch Max
BC	20	77.058	21.33	17.00	21.90
BO	1756	80.549	23.69	23.20	24.74
BP	3955	74.4	23.78	23.20	27.00
BR	262	84.268	22.50	22.40	23.48
BS	67	88.09	17.70	17.70	17.70
BU	4	73.95	20.60	20.60	20.60
PC	2	53.2	25.00	25.00	25.00
PO	39	52.563	24.94	23.00	26.50
PP	676	51.451	25.28	23.50	26.50
PR	6	49.733	23.38	22.27	23.89
SAS	73	162.52	17.11	15.45	18.00
6 860					
Hide	Feedlot	18.30			
	Veldt	18.30			
Dorper	ea	100.00			
Merino	ea	75.00			

Baconer BO - Purchase Price



THIS INFORMATION IS PROTECTED AGAINST COPYING OR DISTRIBUTION WITHOUT PRIOR PERMISSION FROM THE RMAA BOARD.

FOR ENQUIRIES, PLEASE CONTACT RMAA AT TEL (012) 349 1237/8 or priceinformation@rmaa.co.za

Disclaimer: In no event shall the RMAA be liable for any direct, special, indirect or consequential damages, or any other damages of any kind, including but not limited to loss of use, loss of profits, or loss of data, whether in an action in contract, tort (including but not limited to negligence), or otherwise, arising out of or in any way connected with the use of this information. While the RMAA takes great care in compiling the contents of this page, it is nevertheless only meant to provide non-binding general information and cannot replace detailed individual advice to help the prospective buyer make his decision. The RMAA does not guarantee that the information on these pages is up-to-date, accurate and complete.