

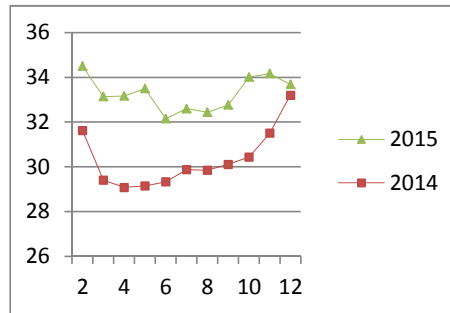
NATIONAL SOUTH AFRICAN PRICE INFORMATION FOR WEEK 12

Class Units Avg Mass Avg Purch Price Avg Selling Price Selling min Selling max From 2015/03/16 To 2015/03/22

CATTLE

Class	Units	Avg Mass	Avg Purch Price	Avg Selling Price	Selling min	Selling max
A2	3570	254.49	33.67	33.68	25.50	37.40
A3	601	260.92	33.91	33.88	29.50	37.40
AB2	292	220.41	30.23	31.33	22.00	37.40
AB3	38	286.04	31.39	34.02	28.50	37.40
B2	260	236.74	27.27	27.51	19.00	37.40
B3	91	304.29	26.19	26.68	22.00	37.40
C2	818	244.83	24.46	25.14	22.00	28.60
C3	391	271.39	24.45	25.13	22.00	28.60
6 061						

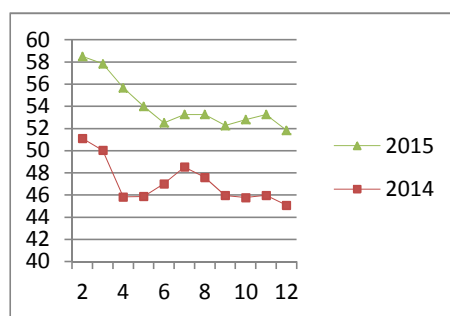
Beef A2 - Sales Price



LAMB/SHEEP

A0	60	13.78	43.68	42.17	30.00	42.49
A1	417	15.89	51.06	49.85	46.73	63.25
A2	4016	19.03	51.64	51.83	48.54	63.25
A3	397	20.95	52.45	52.64	49.14	63.25
A4	26	18.83	46.52	48.47	48.17	50.00
A5	6	21.33	38.84	40.56	40.00	44.00
A6	14	18.67	43.09	39.40	30.00	42.49
AB2	14	24.19	48.20	53.68	47.17	61.25
AB3	6	21.95	35.79	35.79	35.79	35.79
B2	38	26.09	35.34	35.92	35.50	36.03
B3	10	32.26	35.36	35.70	35.50	36.00
C2	320	22.62	35.76	36.42	32.30	37.24
C3	43	29.48	35.02	35.82	32.30	37.50
5 367						

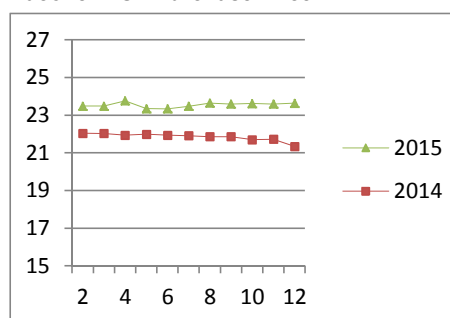
Lamb A2 - Sales Price



PIGS

Class	Units	Avg Purch Price	Purch Min	Purch Max
BC	22	71.239	17.00	26.50
BO	2063	79.98	23.20	26.50
BP	4367	74.735	23.20	26.50
BR	392	83.494	22.30	23.48
BS	5	89	20.00	20.00
BU	2	51.8	20.60	20.60
PC	47	45.255	18.00	25.00
PO	35	52.24	23.00	26.00
PP	799	49.67	24.28	27.00
PR	11	47.4	22.27	23.89
SAS	184	155.96	15.45	18.00
7 927				
Hide	Feedlot	18.40		
	Veldt	18.40		
Dorper	ea	87.50		
Merino	ea	73.75		

Baconer BO - Purchase Price



THIS INFORMATION IS PROTECTED AGAINST COPYING OR DISTRIBUTION WITHOUT PRIOR PERMISSION FROM THE RMAA BOARD.

FOR ENQUIRIES, PLEASE CONTACT RMAA AT TEL (012) 349 1237/8 or priceinformation@rmaa.co.za

Disclaimer: In no event shall the RMAA be liable for any direct, special, indirect or consequential damages, or any other damages of any kind, including but not limited to loss of use, loss of profits, or loss of data, whether in an action in contract, tort (including but not limited to negligence), or otherwise, arising out of or in any way connected with the use of this information. While the RMAA takes great care in compiling the contents of this page, it is nevertheless only meant to provide non-binding general information and cannot replace detailed individual advice to help the prospective buyer make his decision. The RMAA does not guarantee that the information on these pages is up-to-date, accurate and complete.