

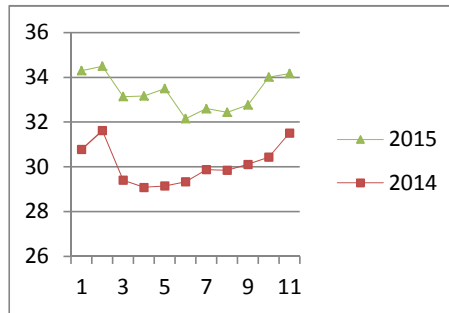
NATIONAL SOUTH AFRICAN PRICE INFORMATION FOR WEEK 11

Class Units Avg Mass Avg Purch Price Avg Selling Price Selling min Selling max From 2015/03/09 To 2015/03/15

CATTLE

Class	Units	Avg Mass	Avg Purch Price	Avg Selling Price	Selling min	Selling max
A2	3883	250.53	33.61	34.16	27.50	37.95
A3	493	256.87	34.04	34.42	32.08	37.95
AB2	147	242.05	29.16	30.47	21.00	37.95
AB3	14	274.35	30.10	34.26	28.50	37.95
B2	130	235.37	25.95	26.81	21.00	37.95
B3	50	343.14	25.13	25.93	23.50	37.95
C2	473	207.00	24.09	25.13	23.00	28.60
C3	142	239.82	24.76	24.97	23.00	28.60
5 332						

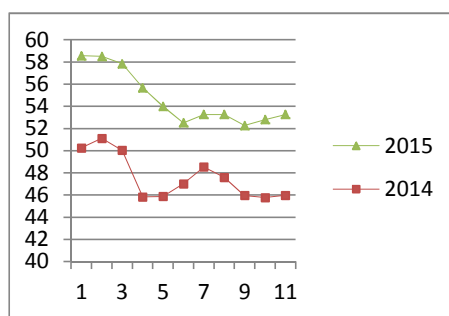
Beef A2 - Sales Price



LAMB/SHEEP

A0	180	13.63	43.84	42.33	32.00	43.50
A1	835	16.07	51.55	50.82	46.89	63.25
A2	4256	18.99	52.06	53.26	48.08	63.25
A3	378	21.17	53.12	54.44	48.39	63.25
A4	26	23.27	47.44	50.64	46.98	63.25
A5	2	22.60	47.00	45.00	45.00	45.00
A6	28	20.89	46.32	40.90	32.00	43.50
AB2	110	22.11	48.32	46.99	38.00	61.25
AB3	7	27.97	45.95	46.19	38.00	48.00
B2	103	22.02	40.05	39.62	33.55	45.12
B3	26	27.07	38.28	38.65	33.00	45.50
C2	938	23.23	38.07	39.35	30.00	41.40
C3	118	25.45	38.28	39.17	32.49	41.89
7 007						

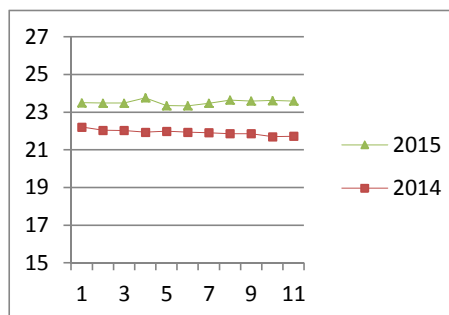
Lamb A2 - Sales Price



PIGS

Class	Units	Avg Purch Price	Purch Min	Purch Max
BC	18	78.787	19.77	21.90
BO	1840	80.639	23.20	25.38
BP	3887	74.648	23.20	26.50
BR	274	83.499	22.40	24.74
BS	29	88.569	17.70	17.70
BU	9	73.644	19.00	20.60
PC	15	48.9	21.50	21.50
PO	29	53.931	23.64	26.50
PP	688	52.142	24.42	26.50
PR	19	44.9	22.50	22.50
SAS	111	163.68	15.50	18.00
6 919				
Hide	Feedlot	18.33		
	Veldt	18.33		
Dorper	ea	96.00		
Merino	ea	63.00		

Baconer BO - Purchase Price



THIS INFORMATION IS PROTECTED AGAINST COPYING OR DISTRIBUTION WITHOUT PRIOR PERMISSION FROM THE RMAA BOARD.

FOR ENQUIRIES, PLEASE CONTACT RMAA AT TEL (012) 349 1237/8 or priceinformation@rmaa.co.za

Disclaimer: In no event shall the RMAA be liable for any direct, special, indirect or consequential damages, or any other damages of any kind, including but not limited to loss of use, loss of profits, or loss of data, whether in an action in contract, tort (including but not limited to negligence), or otherwise, arising out of or in any way connected with the use of this information. While the RMAA takes great care in compiling the contents of this page, it is nevertheless only meant to provide non-binding general information and cannot replace detailed individual advice to help the prospective buyer make his decision. The RMAA does not guarantee that the information on these pages is up-to-date, accurate and complete.